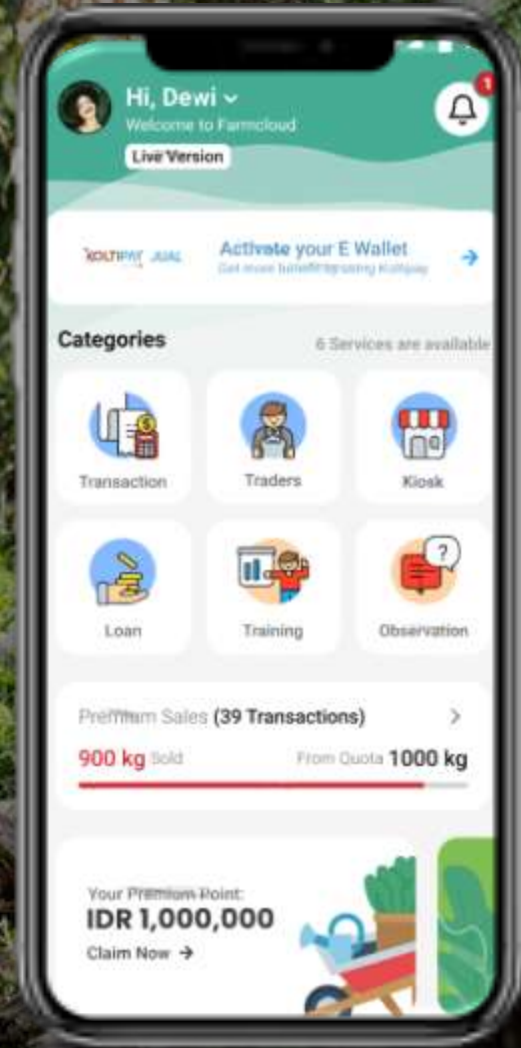




# Enabling Global Supply Chains to be Inclusive, Climate-Smart, and Traceable



BEYOND TRACEABILITY



We help **17,000+** enterprises achieve traceable and resilient supply chains

We help **1,706,000 +** producers increase their annual income up to 4x



# Our Vision

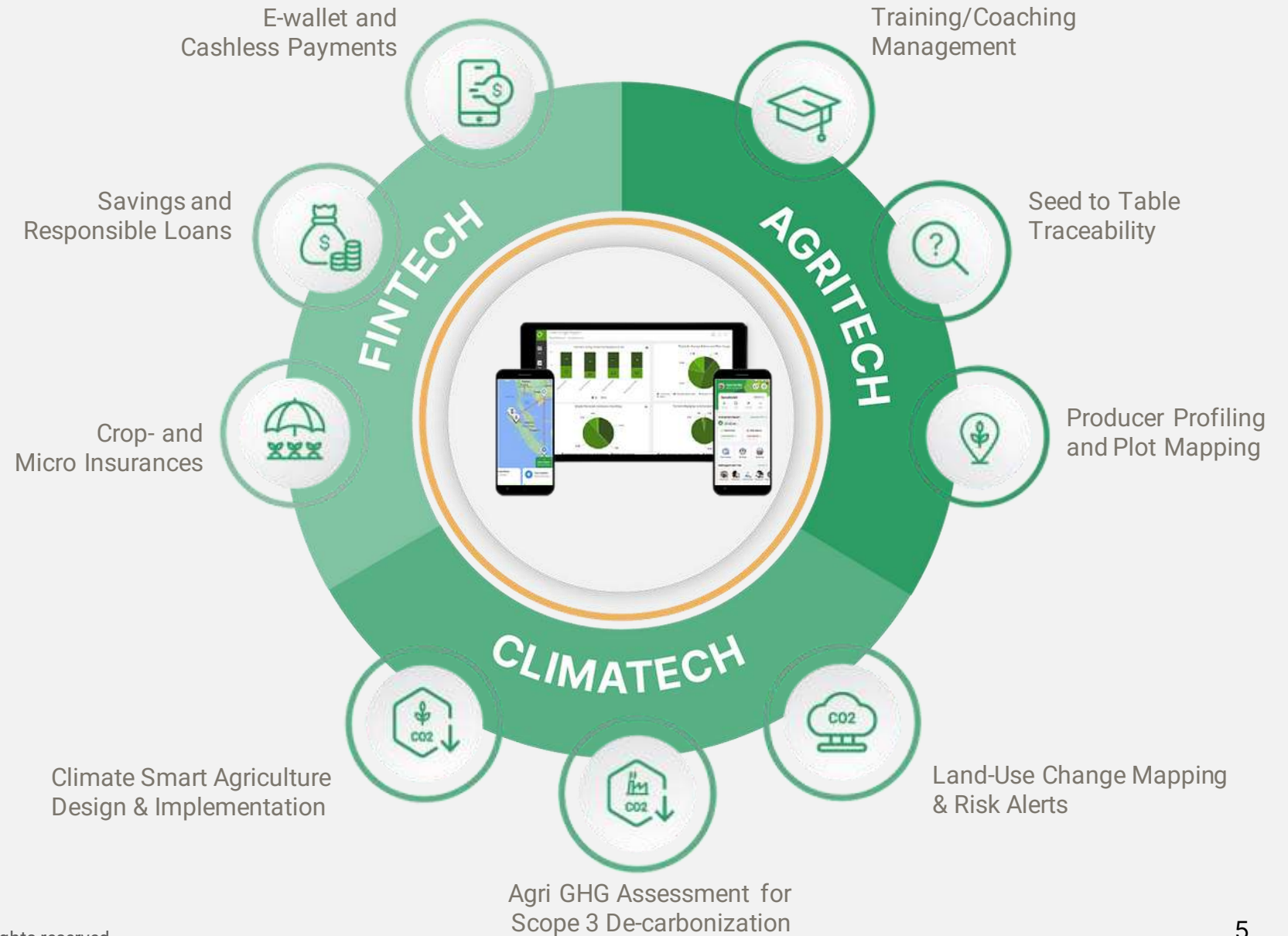
To be the world's leading tech company  
in building **ethical, transparent, and  
sustainable** supply chains.

# Our Mission

We strive to grow a high-performance organization, **digitizing agribusinesses and producers** to the transition of sustainable production and traceable sourcing.

As a **triple-tech company**, we combine **Fintech**, **AgriTech**, and **ClimateTech** with 'boots on the ground' for sustainable global supply chains.

Professional Services, **Beyond Traceability**



# Our Story Started in 2013



PT **Koltiva** founded in Indonesia with our first CocoaTrace to digitize smallholder producers in Cocoa.



**Koltiva AG** founding in Switzerland, and scale up to Palm Oil with our first 'Boots on the Ground'



**Seascope** expansion for Seaweed, and launch of our first multi-crop platform



Launch of **integrated traceability** platform, extension services, and digital finance services.



Establishing KoltiTrade as an **ethical trade services** with single origin and inputs.

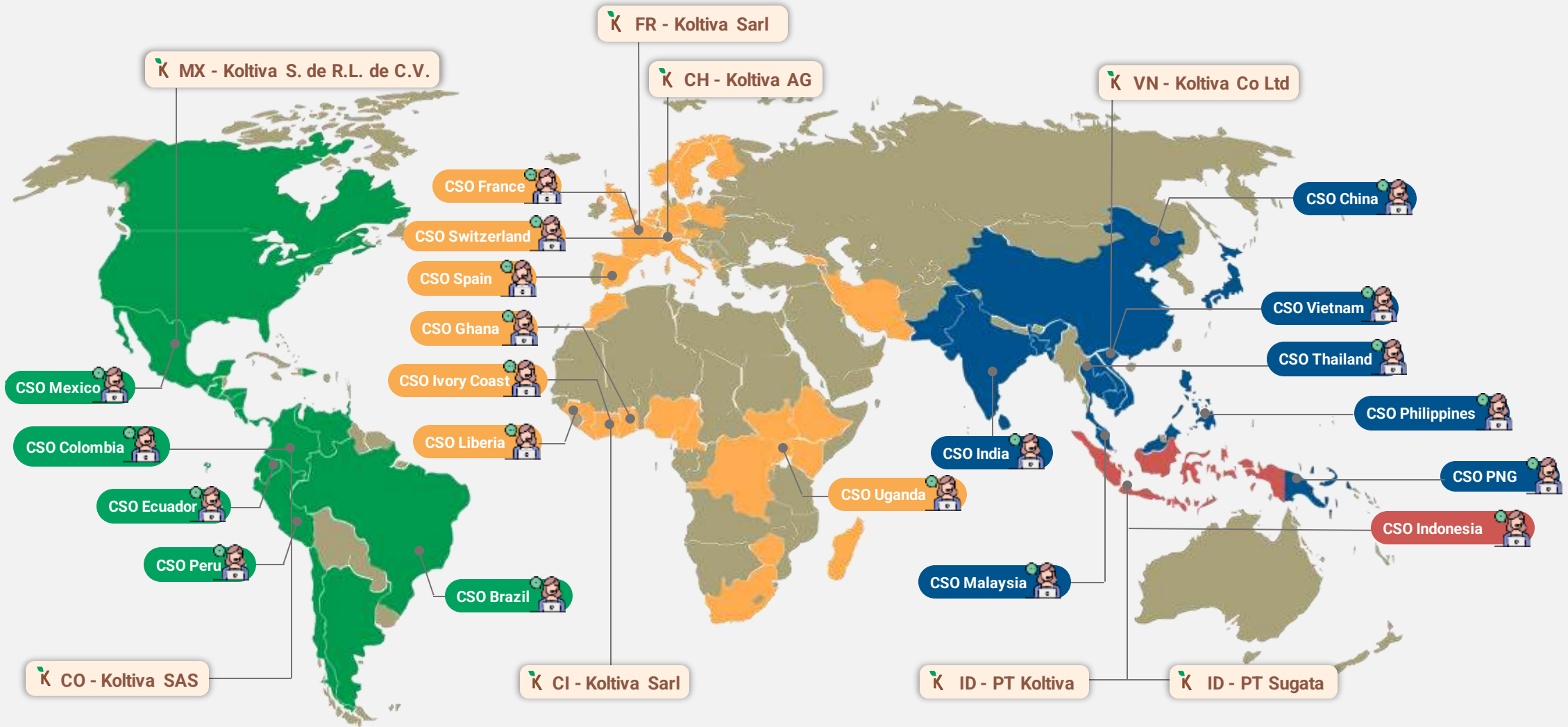


Reach the milestone of expansion of **1 million registered producers** and business users across our platform solutions



65 Countries, Continues to Grow

# 4 Global Regions | 65 Countries | 8 Entities | 20 Country Support Offices



**NORTH, CENTRAL, SOUTH - AMERICAS**  
18 Countries, 2 Legal Entities, 5 CSO Offices

**EUROPE, MIDDLE EAST AND AFRICA - EMEA**  
33 Countries, 3 Legal Entities, 7 CSO Offices

**ASIA PACIFIC - APAC**  
13 Countries, 1 Legal Entity, 7 CSO Offices

**INDONESIA**  
1 Country, 2 Legal Entities, 1 CSO Office

# We provide transparency in complex global supply chains for all stakeholders

**40,000**

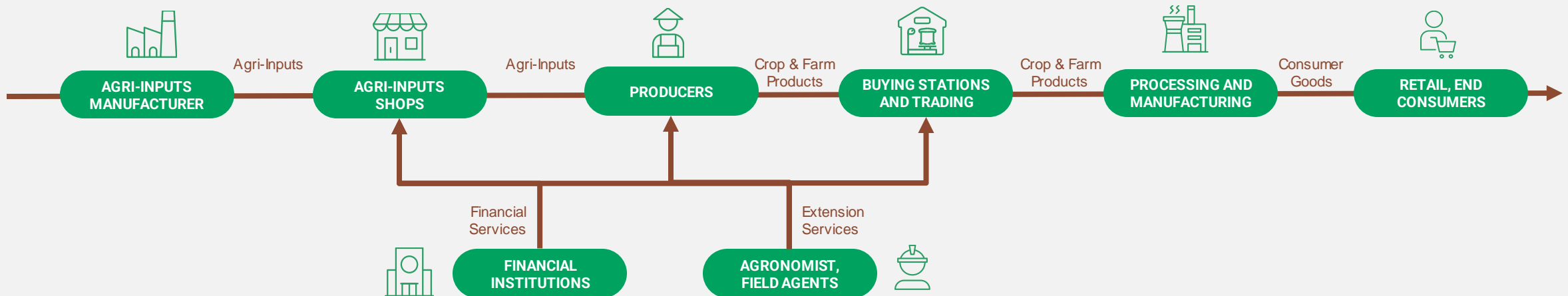
Active Producers and Business Users

**2 million**

Seed to Table Transactions

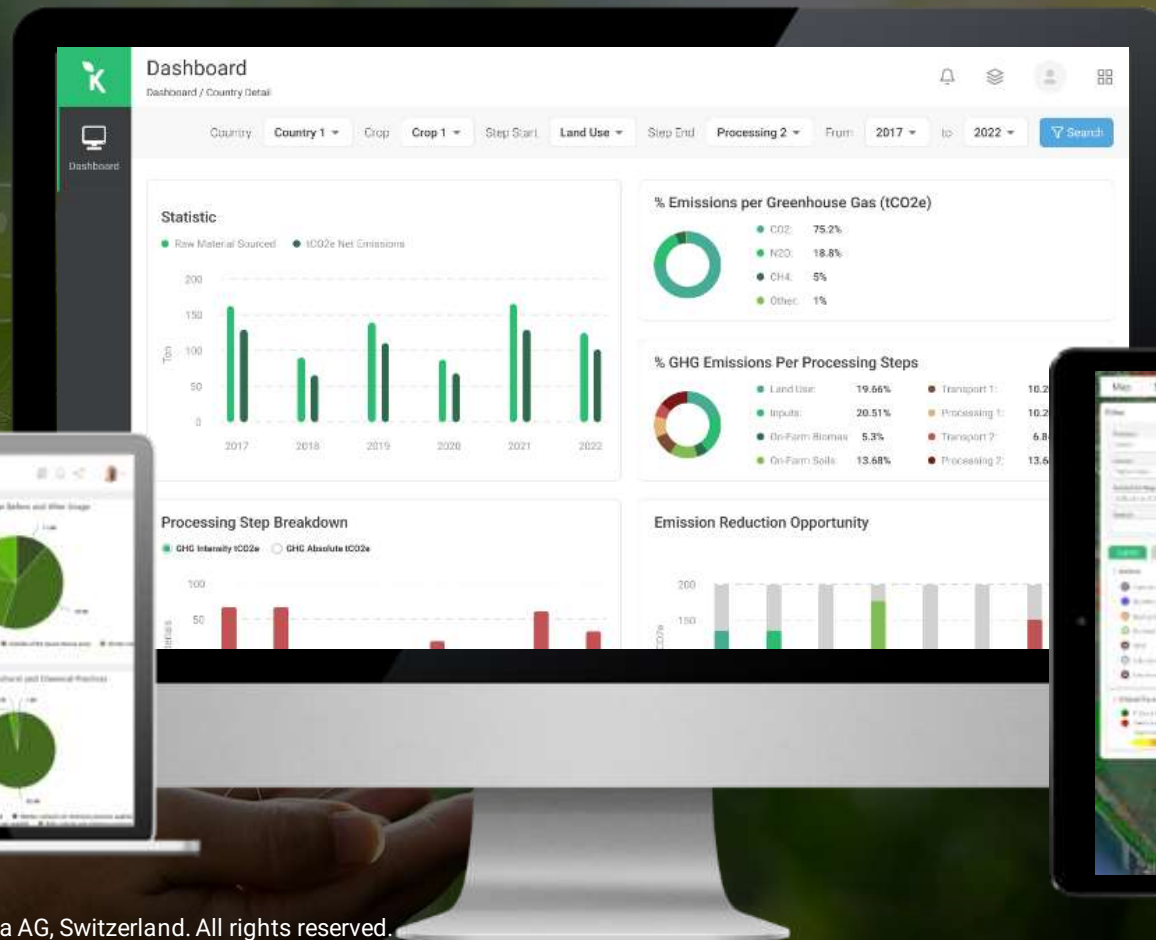
**\$ 400 Mn**

Gross Transaction Volume (GTV)





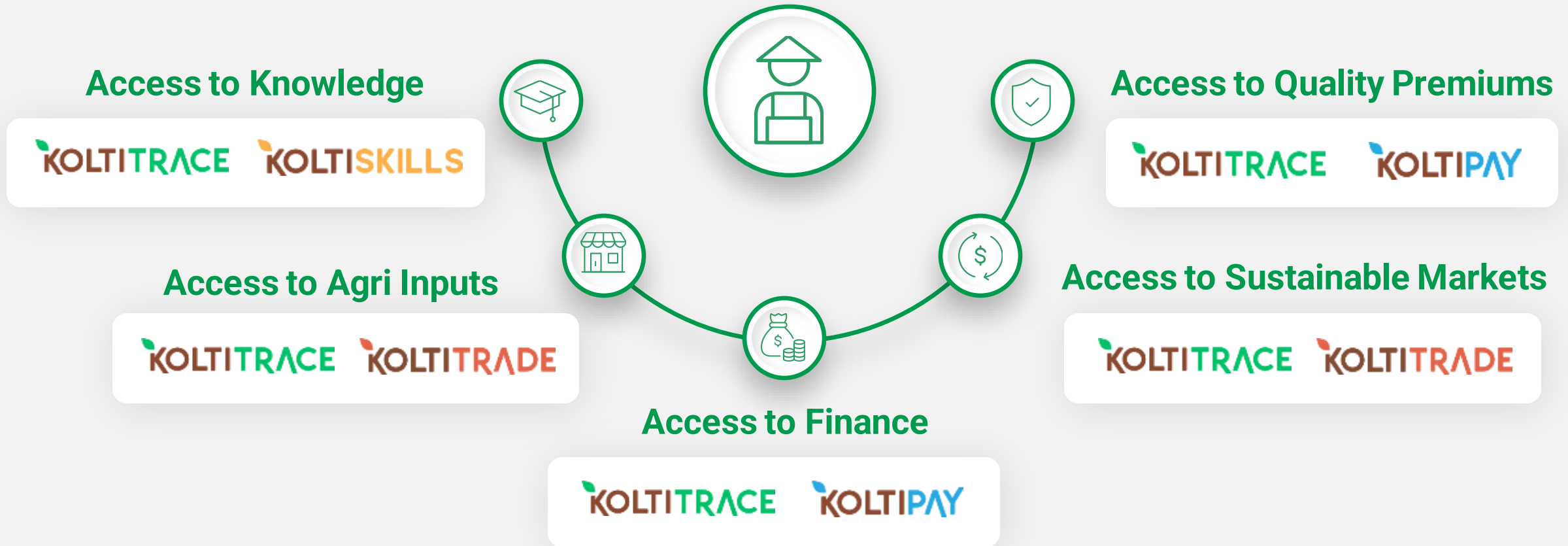
# We integrate complex data, support sustainability compliance for our clients' whole supply chain



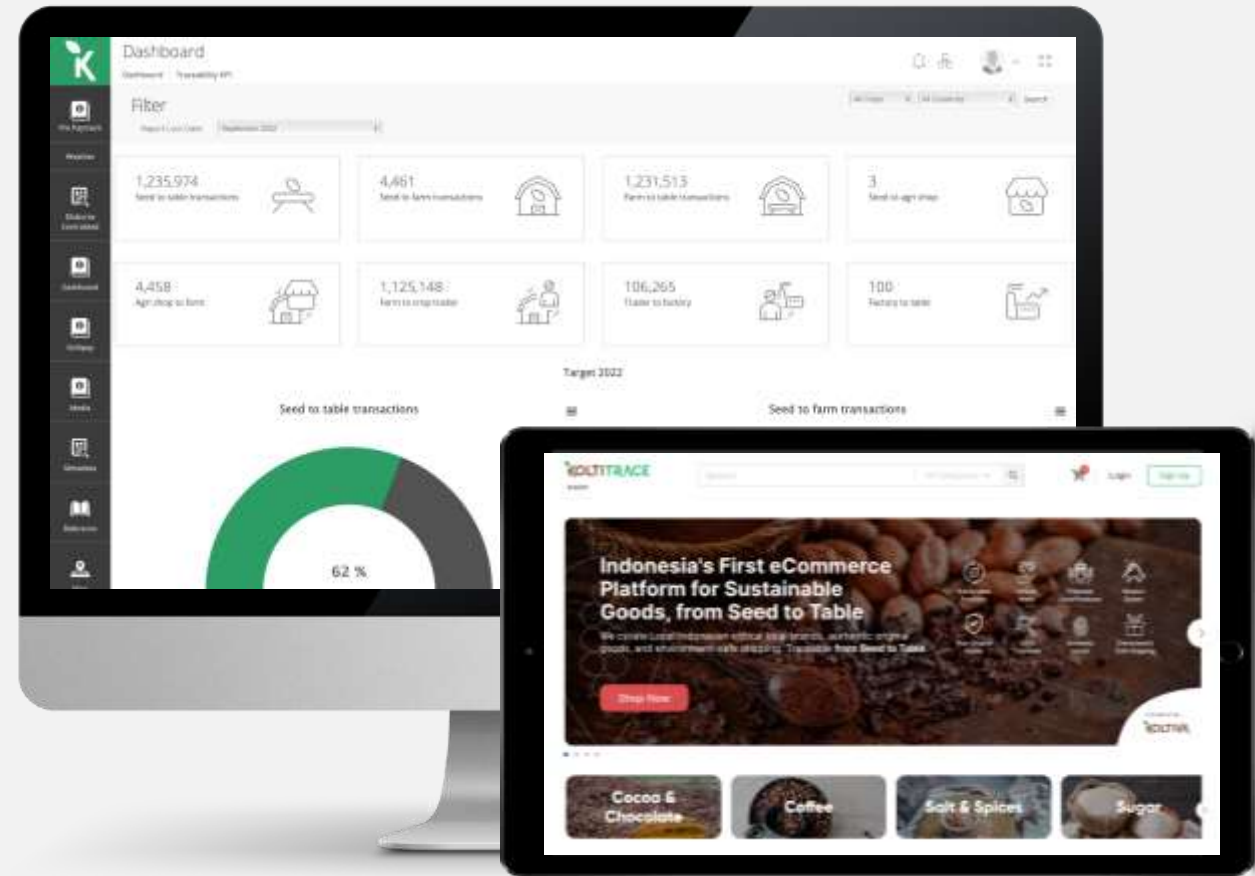
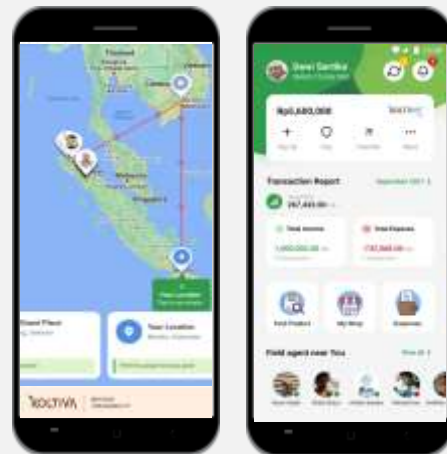
# Solving Producers Pain-Points

We improve farm productivity and increase producers' income 4x

*A purposive sampling of cocoa producers using all our products & services.*



# We increase consumers' trust with traceability for seed-to-table impact



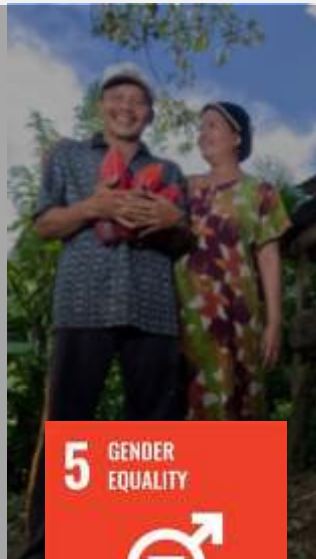
# Businesses Need Holistic Innovations to Achieve the Impact of Sustainable Economic Growth



1 NO POVERTY



The need for a holistic solution to improve livelihood.



5 GENDER EQUALITY



Achieve gender equality and solve discrimination.



8 DECENT WORK AND ECONOMIC GROWTH



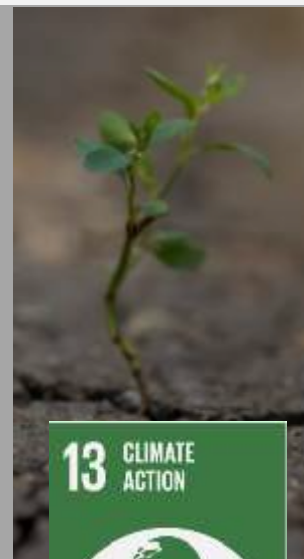
Promote farm productivity, labour market challenges.



12 RESPONSIBLE CONSUMPTION AND PRODUCTION



Ensure sustainable consumption & production pattern.



13 CLIMATE ACTION



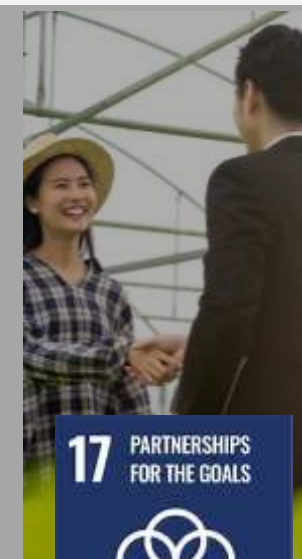
Take urgent action to combat climate change and its impact.



14 LIFE BELOW WATER



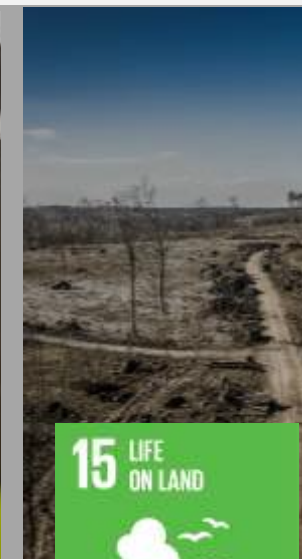
Conserve and sustainably use the oceans, seas & marine resources.



17 PARTNERSHIPS FOR THE GOALS



Promote inclusive partnerships for equitable and sustainable development.



15 LIFE ON LAND



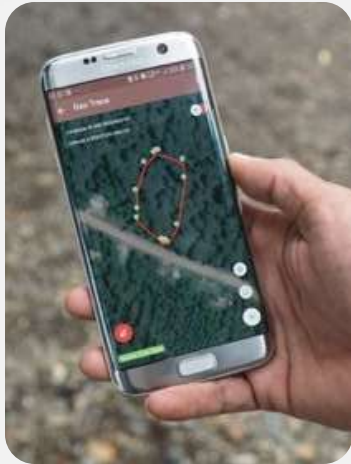
Protect, restore and promote sustainable use of terrestrial ecosystems.

# Our 4 Integrated Business Lines



## PRODUCTS

### KOLTITRACE



#### TECH SOLUTIONS FROM SEED TO TABLE

Web, mobile, MIS, GIS, and IOT solutions empowering producers and businesses in global supply chains.

### KOLTIPAY



#### RESPONSIBLE DIGITAL FINANCE AND PAYMENTS

Integrated fintech platform for cashless payments, loans, savings, micro-insurance, and paying bills.



## SERVICES

### KOLTITRADE



#### AGRI-INPUTS DISTRIBUTION AND CROP TRADING

Distribution of high quality agri-inputs and single origin crop post-harvest processing and trading

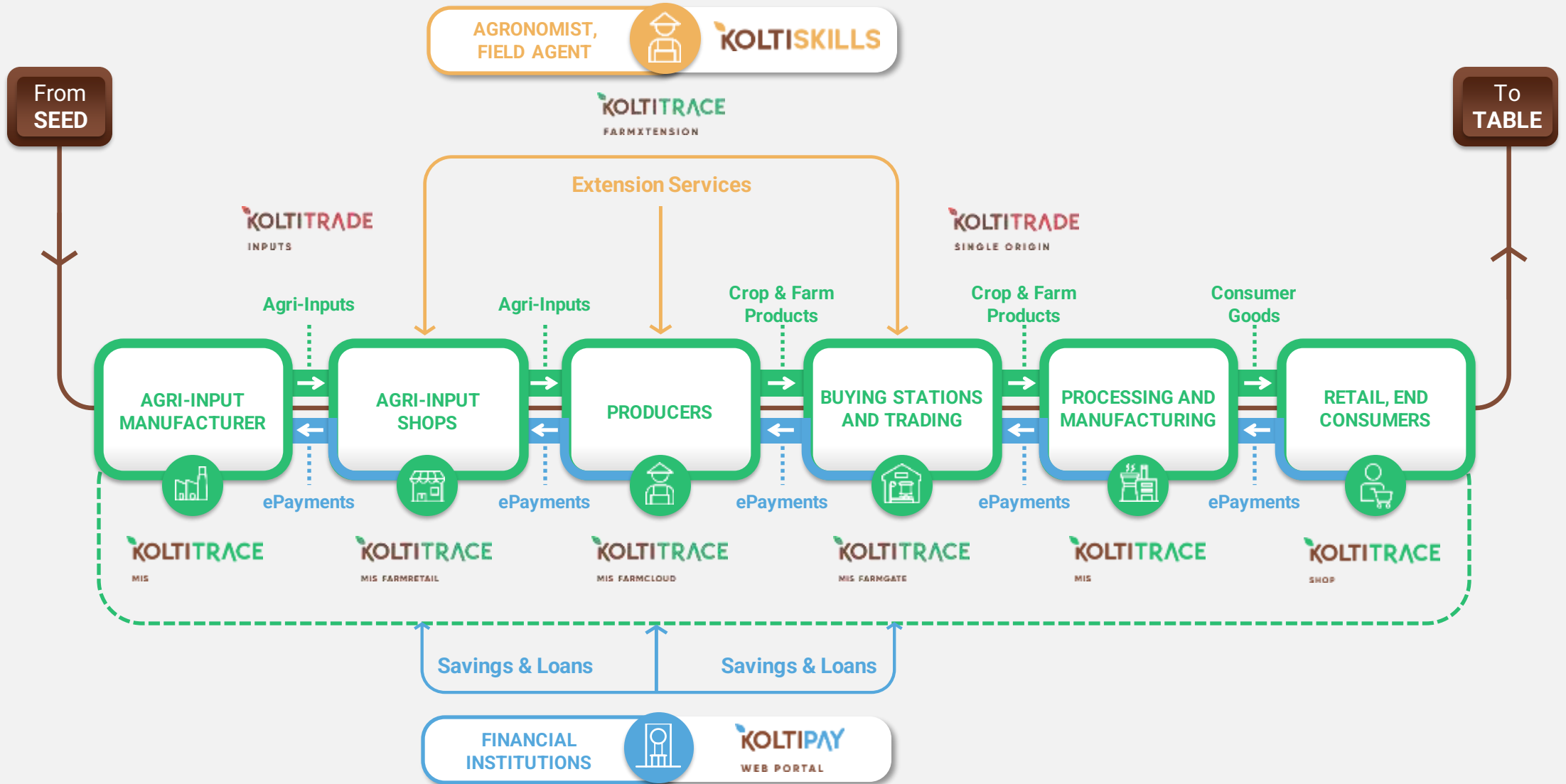
### KOLTISKILLS



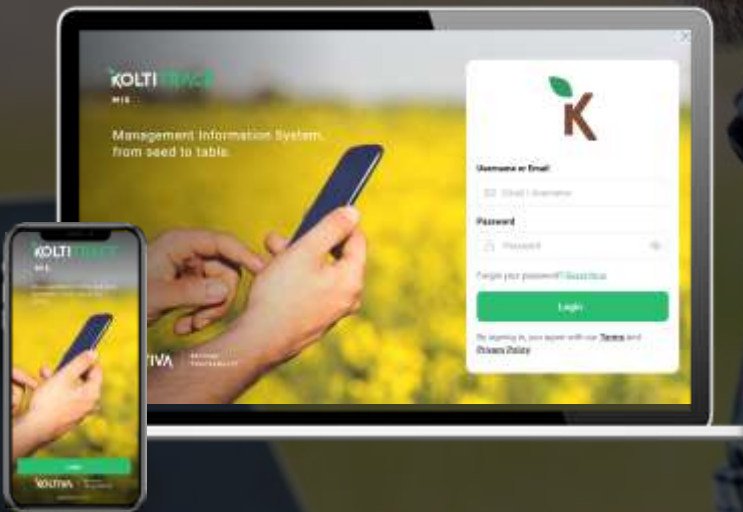
#### PROFESSIONAL SERVICES BEYOND TRACEABILITY

'Boots on the Ground' for extension services, farming support, and carbon monitoring.

# Our Holistic Tech & Service Solutions



# KoltiTrace MIS, Integrated **Multi-Crop Platform** for Businesses and Producers



## Farm Management

Producers data profile, training metrics, register and survey suppliers, interaction with producers including price notifications.



## Traceability Data-Proven

Crop production traceability with complete producers, data profile and verified digital transaction from seed to table.



## Geo Location Mapping

Advanced geo-location mapping for verified supply chains. Map production units and fields.



## Supply Chain GHG Assessment

Seed to Factory Scope 3 GHG emissions, including mapping deforestation and emissions from historic Land Use Change (LUC).



## Connected with IoT

Automate data exchange with smart farming technology solutions with digital scales, portable soil analysis, and solar-powered weather station.



## Extension Services

Producer surveys, polygon mapping of farm boundaries, training and coaching registrations, including access to agriculture knowledge & material.

# KoltiSkills, Extension Services Beyond Traceability

Koltiva's 'boots-on-the-ground' extension services support companies to implement sustainable sourcing efforts in the first mile of global value chains. Koltiva deploys hundreds of Field Agents globally to work directly in producer communities.

## KOLTISKILLS

Koltiva's Field Agents support businesses and producer communities to accelerate the adoption of sustainable production practices, which in turn improves their income and protects the environment.

Through training and surveying activities, KoltiSkills offers critical support for our clients' sustainable sourcing projects by using a combined technology and human interaction approach.



### SUPPLY CHAIN MAPPING AND VERIFICATION

Producer surveying to map the origins of your products, verify farm production practices and emissions, and ensure compliance to your sustainability standards (or third-party certification standards).



### TRAINING AND COACHING

Group training to raise awareness of sustainable practices and one-on-one coaching to support producer households in implementing their farm development plans.



### PRODUCT TRACEABILITY

Monitoring for supply chain actors in the field to verify product segregation and support quality control, from seed to table.



# KoltiPay, Responsible **Digital Finance** for the Agriculture Sector



## Premium Distribution

Execute premium payment distributions to producers and suppliers with affordable cost, easy-to-use single dashboard.



## Agri-Input Purchasing

Agri-input purchasing process from producers to kiosk, distributors, and manufacturers with cashless payments.



## Manage Loan Application

Easy access to loan application, credit scoring with Machine Learning (ML), verify & approve loans, repayment monitoring.



## Crop Procurement

Procure producers' crop with ease and select payment options with split cash- and cashless transactions to eWallet and virtual accounts.



## PPOB

Payment point online bank is available to allow users pay electricity bills, internet packages, phone credits, etc.

# KoltiTrade Distribution of Agri-Inputs and Single Origin Crop Trading

KOLTITRADE

TRANSPARENT AND INCLUSIVE



**KOLTITRADE**  
INPUTS

Disrupting and improving agri-inputs trading with proprietary technology.

Vertical integration and service bundling to improve local agri-inputs production (seedling nurseries) and fertilizer and compost distribution.



**KOLTITRADE**  
SINGLE ORIGIN

Disrupting and improving farm-produce trading with proprietary technology.

Vertical integration and service bundling to improve local trade of high quality and single origin crops to premium markets.

# Our executive team



**Manfred Borer**  
Co-Founder, Chief Executive Officer, Chairman of the Board

**Manfred** has over 20 years' experience in entrepreneurship and 16 years in rural development and working alongside multinational companies' agriculture supply chains.



**Bernard Chevalier**  
Co-Founder, Chief of Staff, Member of the Board

**Bernard** has over 12 years of experience in leadership, organizational development, and project management in various executive positions in different Swiss companies



**Ainu Rofiq**  
Co-Founder, Member of the Board

**Rofiq** has more than 15 years experience in community development with technology and social agriculture.



**Furqonuddin Ramdhani**  
Co-Founder, Chief Technology Officer

**Dhani** has more than 10 years experience in software development and data warehousing.



**Tika Sylvia**  
Chief Marketing Officer

**Tika** has 10+ years of experience in leading B2B2C across various industries, Logistic, Prop-Tech, and eCommerce.



**Mark Bruny**  
Chief Financial Officer

**Mark** has over 25 years' experience working in corporate finance, public institutions, and banking across Australia, the US, and Asia. He now serves as a Board Member of the Indonesian CFA Society in addition to his duties in Koltiva.



**KOLTIVA**

BEYOND  
TRACEABILITY

[koltiva.com](http://koltiva.com)

[info@koltiva.com](mailto:info@koltiva.com)

[Linkedin](#)

[YouTube](#)

