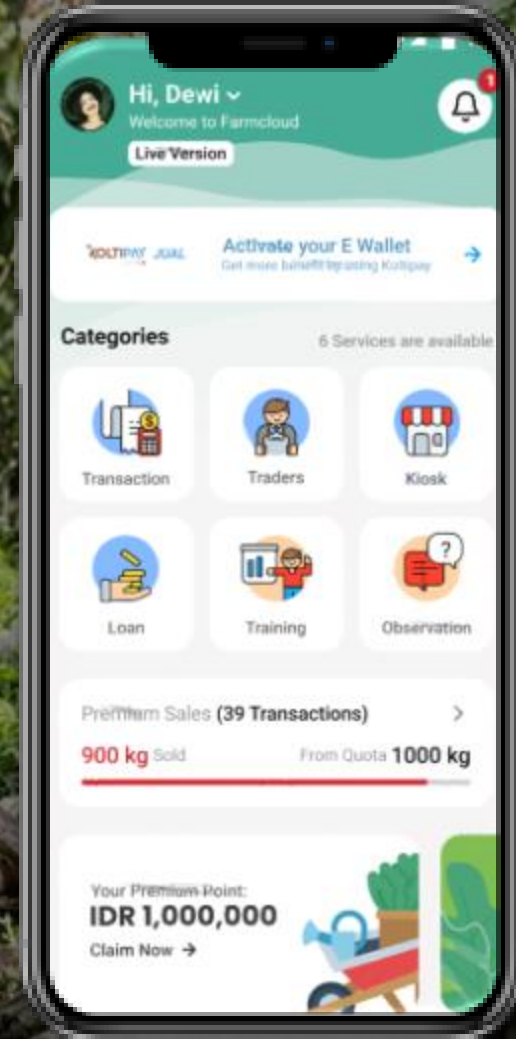




# Enabling Global Supply Chains to be Inclusive, Climate-Smart, and Traceable



BEYOND TRACEABILITY



We help **18,200+** enterprises achieve traceable and resilient supply chains

We help **1,832,000 +** producers increase their annual income up to 4x



# Our Vision

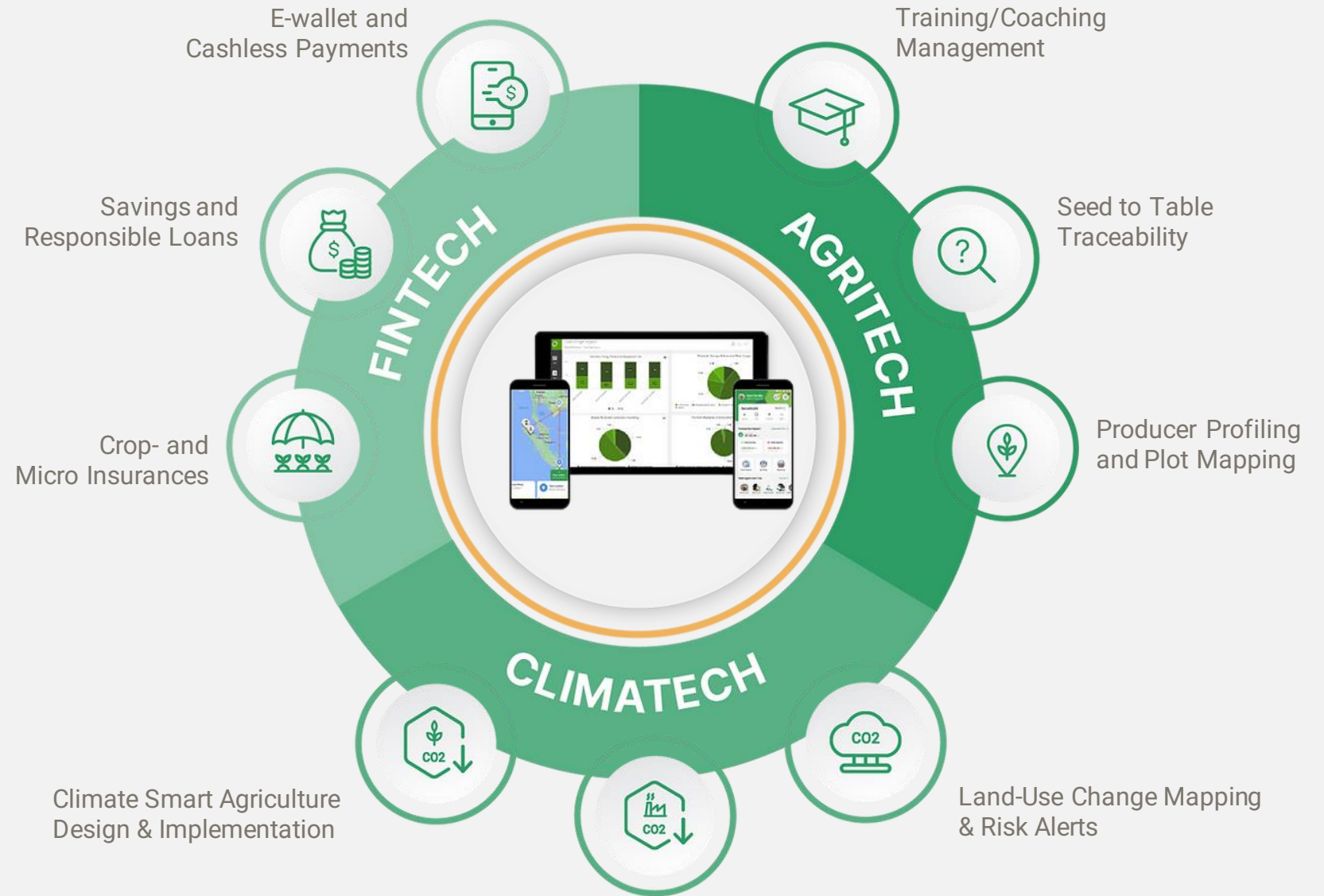
To be the world's leading tech company  
in building **ethical, transparent, and  
sustainable** supply chains.

# Our Mission

We strive to grow a high-performance organization, **digitizing agribusinesses and producers** to the transition of sustainable production and traceable sourcing.

As a **triple-tech company**, we combine **Fintech**, **AgriTech**, and **ClimateTech** with 'boots on the ground' for sustainable global supply chains.

Professional Services, **Beyond Traceability**



# Our Story Started in 2013

2013

PT Koltiva founded in Indonesia with our first CocoaTrace to digitize smallholder producers in Cocoa.

2017

Koltiva AG founding in Switzerland, and scale up to Palm Oil with our first 'Boots on the Ground'

2018

Seascope expansion for Seaweed, and launch of our first multi-crop platform

2021

Launch of **integrated traceability** platform, extension services, and digital finance services.

2022

Establishing KoltiTrade as an **ethical trade services** with single origin and inputs.

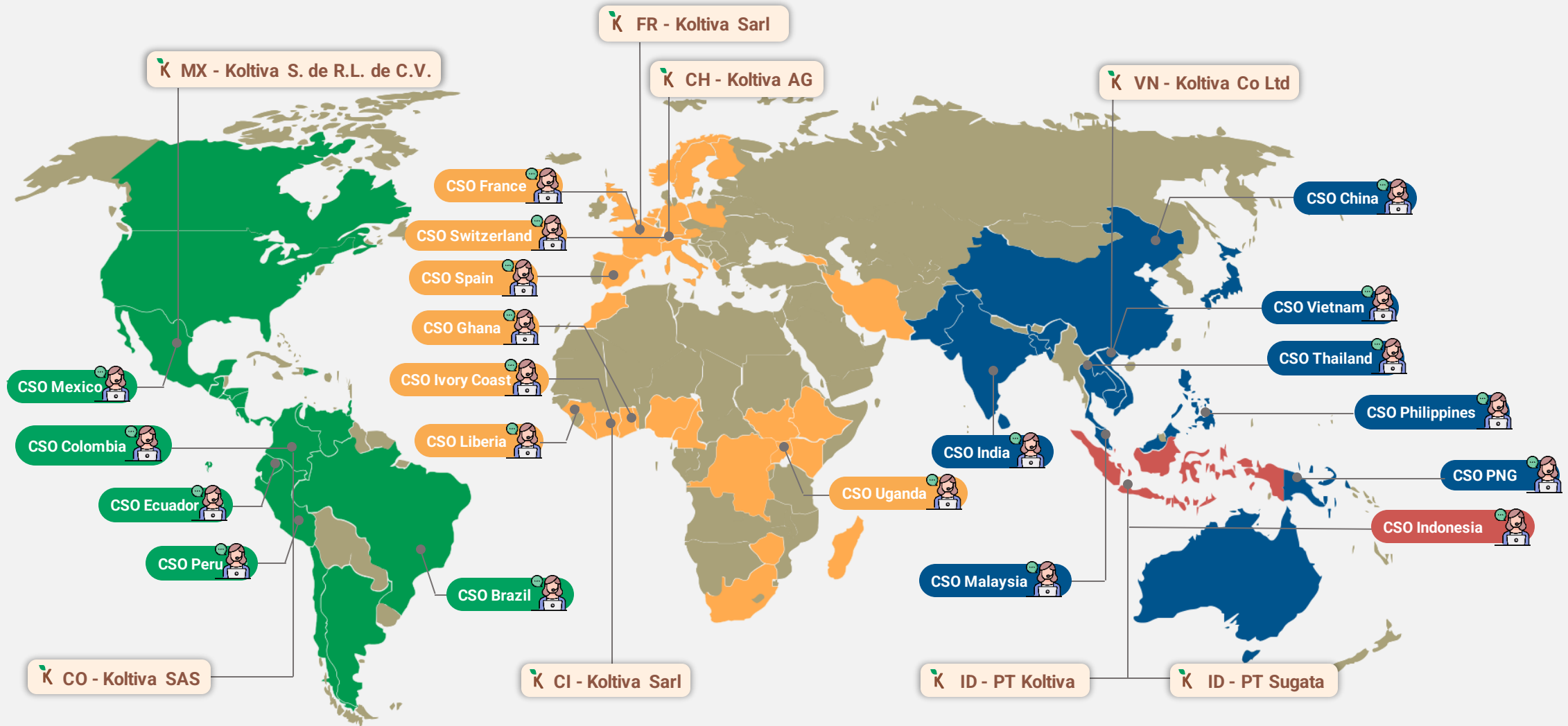
2023

Reach the milestone of expansion of **1 million registered producers** and business users across our platform solutions



66 Countries,  
Continues to Grow

# 4 Global Regions | 66 Countries | 8 Entities | 20 Country Support Offices



**NORTH, CENTRAL, SOUTH - AMERICAS**  
18 Countries, 2 Legal Entities, 5 CSO Offices

**EUROPE, MIDDLE EAST AND AFRICA - EMEA**  
33 Countries, 3 Legal Entities, 7 CSO Offices

**ASIA PACIFIC - APAC**  
14 Countries, 1 Legal Entity, 7 CSO Offices

**INDONESIA**  
1 Country, 2 Legal Entities, 1 CSO Office

# We provide transparency in complex global supply chains for all stakeholders

**40,000**

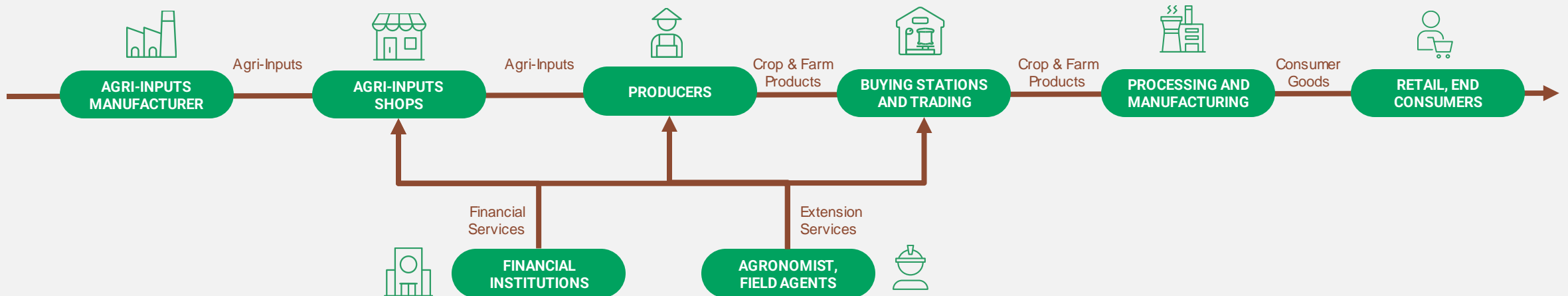
Active Producers and Business Users

**2 million**

Seed to Table Transactions

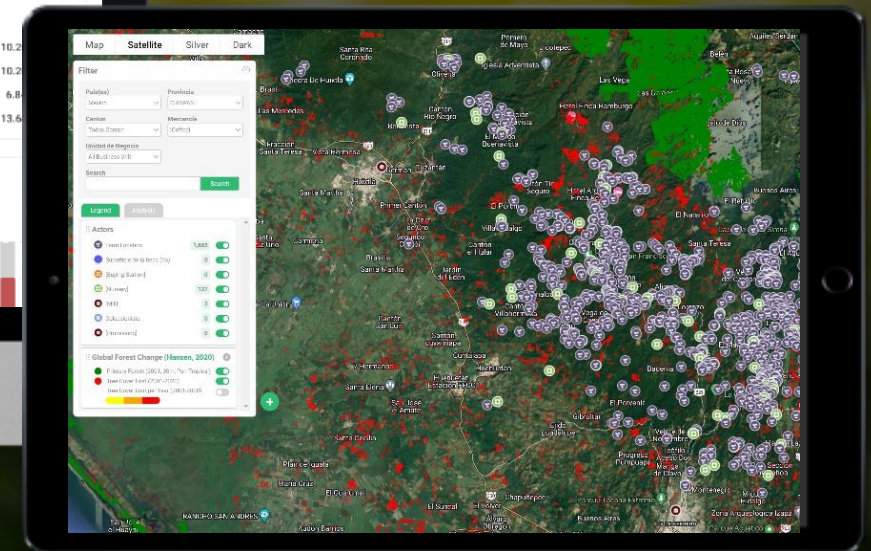
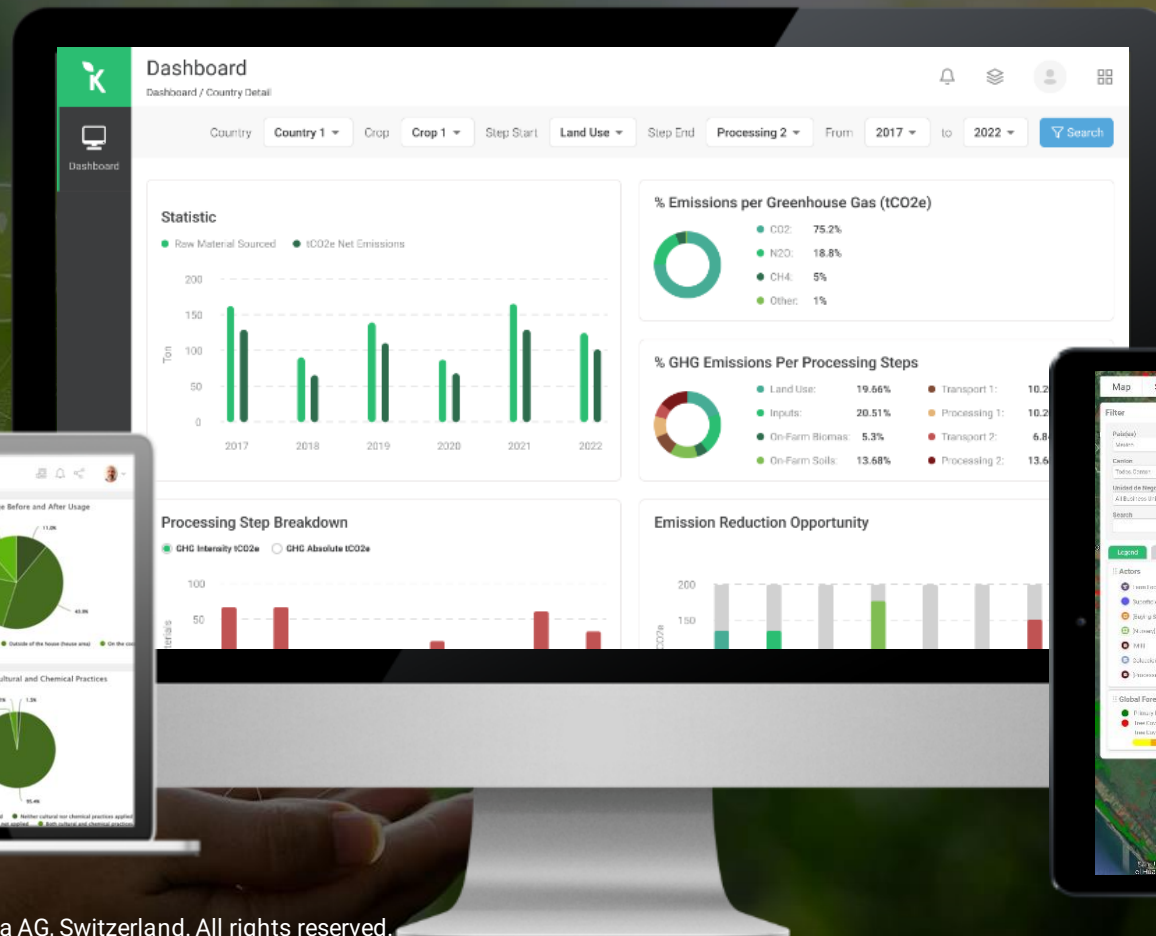
**\$ 400 Mn**

Gross Transaction Volume (GTV)





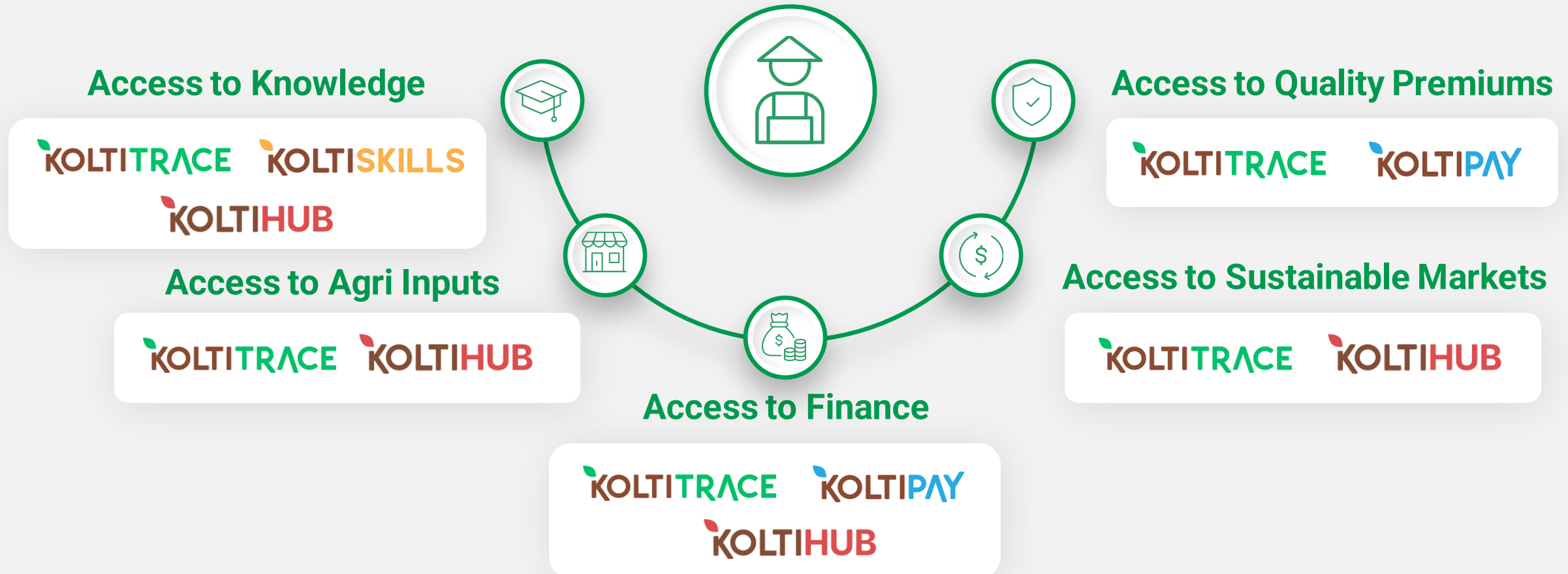
# We integrate complex data, support sustainability compliance for our clients' whole supply chain



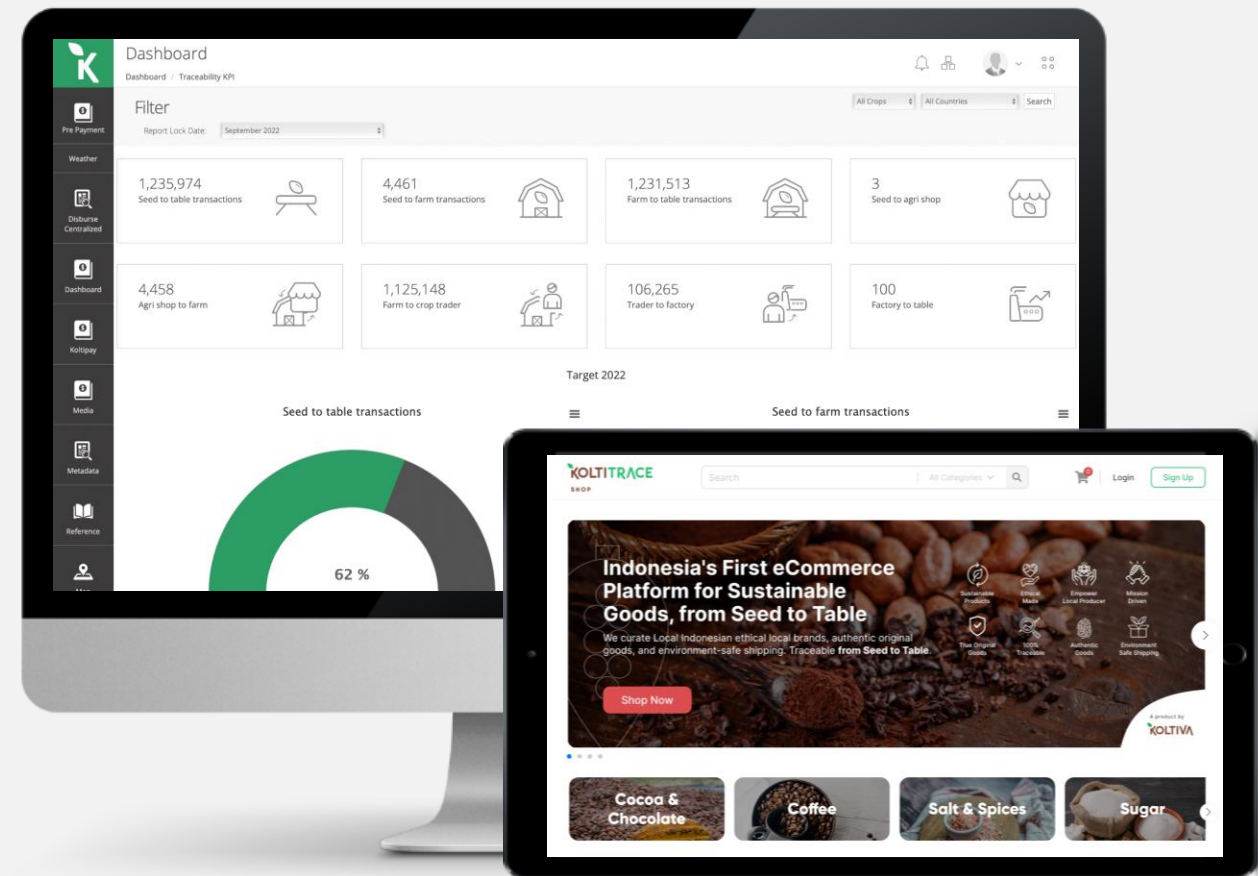
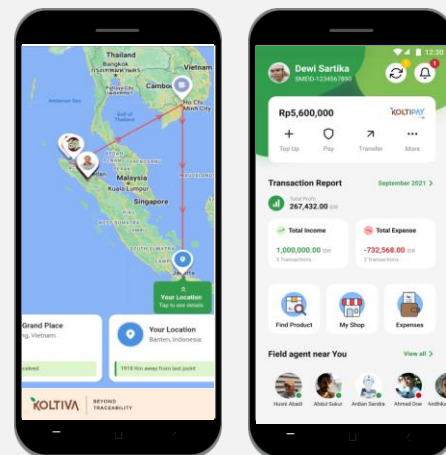
# Solving Producers Pain-Points

We improve farm productivity and increase producers' income 4x

*A purposive sampling of cocoa producers using all our products & services.*



# We increase consumers' trust with traceability for seed-to-table impact



# Businesses Need Holistic Innovations to Achieve the Impact of Sustainable Economic Growth



1 NO POVERTY



The need for a holistic solution to improve livelihood.



5 GENDER EQUALITY



Achieve gender equality and solve discrimination.



8 DECENT WORK AND ECONOMIC GROWTH



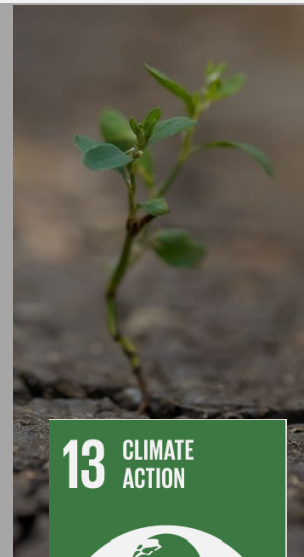
Promote farm productivity, labour market challenges.



12 RESPONSIBLE CONSUMPTION AND PRODUCTION



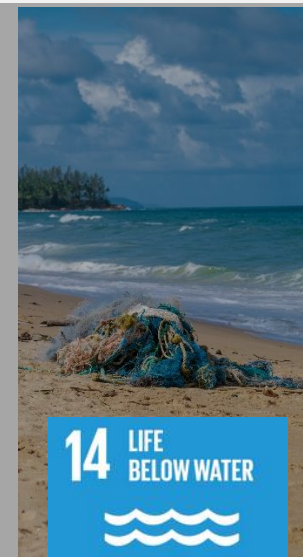
Ensure sustainable consumption & production pattern.



13 CLIMATE ACTION



Take urgent action to combat climate change and its impact.



14 LIFE BELOW WATER



Conserve and sustainably use the oceans, seas & marine resources.



17 PARTNERSHIPS FOR THE GOALS



Promote inclusive partnerships for equitable and sustainable development.



15 LIFE ON LAND



Protect, restore and promote sustainable use of terrestrial ecosystems.

# The Koltiva Impact Drive

Uplifting Smallholder Producers' Livelihoods and Rural Entrepreneurs with Technology-Powered Solutions

## KOLTITRACE



### TECH SOLUTIONS FROM SEED TO TABLE

Software ecosystem integrating MIS, ERP, CRM, CMS, GIS, IoT, and digital financial services for web and mobile, providing an end-to-end solution that connects farmers, buyers, and brands to build traceable and sustainable global value chains.

## KOLTISKILLS



### PROFESSIONAL SERVICES BEYOND TRACEABILITY

Project management and 'boots-on-the-ground' field activities focused on producer farm mapping, risk assessments, impact measurement, and tailored training interventions to build capacity and drive sustainable outcomes for local communities and global buyers.

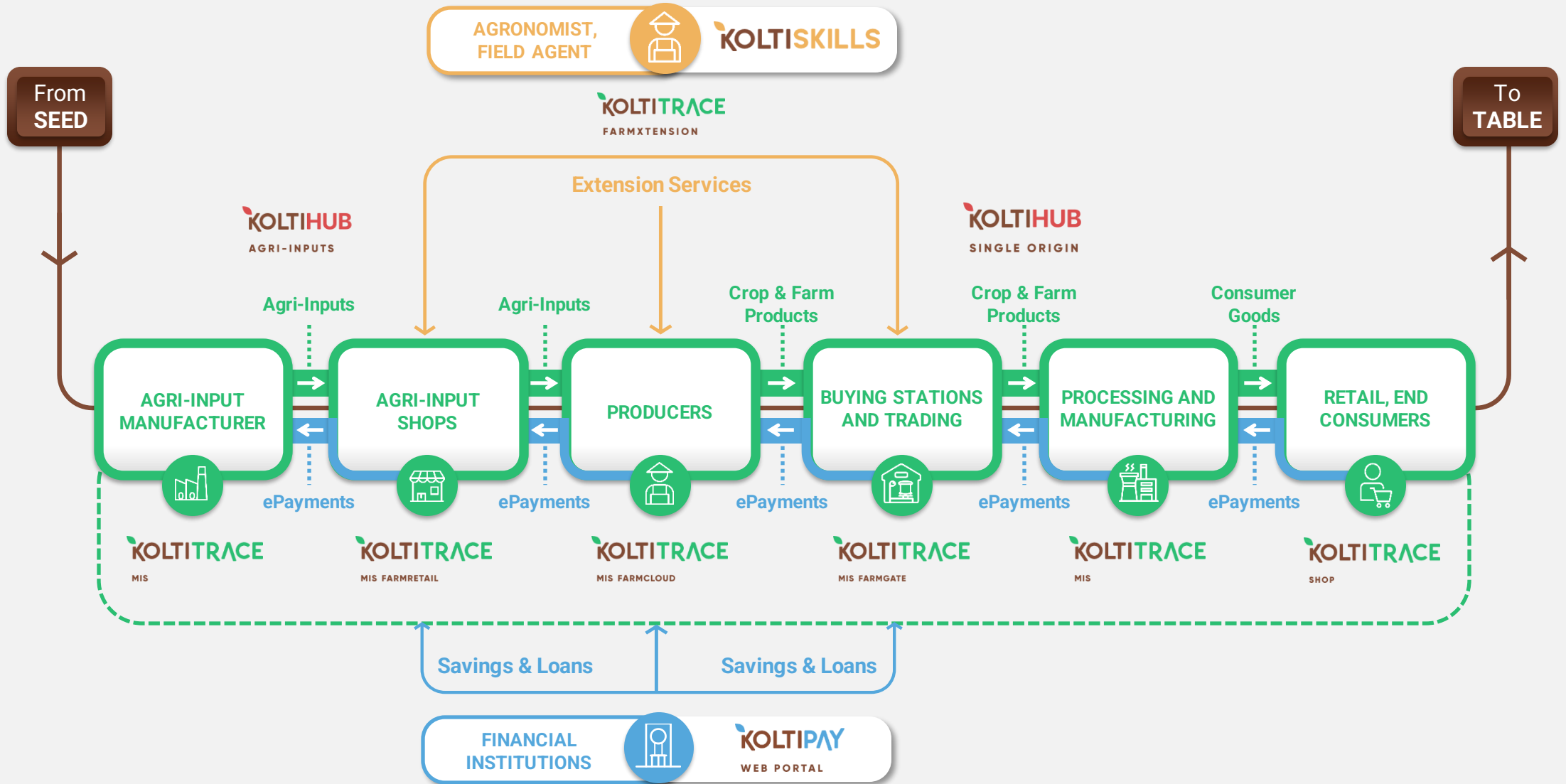
## KOLTIHUB



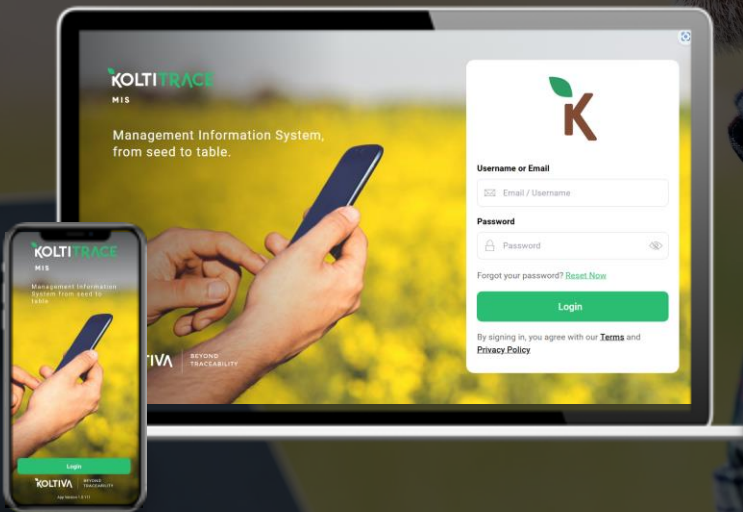
### BUSINESS CENTERS ENABLING RURAL COMMUNITIES

Support services for rural entrepreneurs, enhancing access to financial services, quality inputs, and single-origin crop trading opportunities. Enabled by KoltiTrace software, KoltiHub provides micro-loans, insurance, and market facilitation to empower and uplift rural communities.

# Our Holistic Tech & Service Solutions



# KoltiTrace MIS, Integrated **Multi-Crop Platform** for Businesses and Producers



## Farm Management

Producers data profile, training metrics, register and survey suppliers, interaction with producers including price notifications.



## Traceability Data-Proven

Crop production traceability with complete producers, data profile and verified digital transaction from seed to table.



## Geo Location Mapping

Advanced geo-location mapping for verified supply chains. Map production units and fields.



## Supply Chain GHG Assessment

Seed to Factory Scope 3 GHG emissions, including mapping deforestation and emissions from historic Land Use Change (LUC).



## Connected with IoT

Automate data exchange with smart farming technology solutions with digital scales, portable soil analysis, and solar-powered weather station.



## Extension Services

Producer surveys, polygon mapping of farm boundaries, training and coaching registrations, including access to agriculture knowledge & material.

# KoltiSkills, Extension Services Beyond Traceability

Koltiva's 'boots-on-the-ground' extension services support companies to implement sustainable sourcing efforts in the first mile of global value chains. Koltiva deploys hundreds of Field Agents globally to work directly in producer communities.

## KOLTISKILLS

Koltiva's Field Agents support businesses and producer communities to accelerate the adoption of sustainable production practices, which in turn improves their income and protects the environment.

Through training and surveying activities, KoltiSkills offers critical support for our clients' sustainable sourcing projects by using a combined technology and human interaction approach.



### SUPPLY CHAIN MAPPING AND VERIFICATION

Producer surveying to map the origins of your products, verify farm production practices and emissions, and ensure compliance to your sustainability standards (or third-party certification standards).



### TRAINING AND COACHING

Group training to raise awareness of sustainable practices and one-on-one coaching to support producer households in implementing their farm development plans.



### PRODUCT TRACEABILITY

Monitoring for supply chain actors in the field to verify product segregation and support quality control, from seed to table.

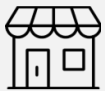


# KoltiPay, Responsible **Digital Finance** for the Agriculture Sector



## Premium Distribution

Execute premium payment distributions to producers and suppliers with affordable cost, easy-to-use single dashboard.



## Agri-Input Purchasing

Agri-input purchasing process from producers to kiosk, distributors, and manufacturers with cashless payments.



## Manage Loan Application

Easy access to loan application, credit scoring with Machine Learning (ML), verify & approve loans, repayment monitoring.



## Crop Procurement

Procure producers' crop with ease and select payment options with split cash- and cashless transactions to eWallet and virtual accounts.



## PPOB

Payment point online bank is available to allow users pay electricity bills, internet packages, phone credits, etc.



# KOLTIHUB

TRANSPARENT AND INCLUSIVE



## KoltiHub for the distribution of **Agri-Inputs**, **Single Origin** crop trading, and **Growth Financing**

KOLTIVA

Koltiva provides its proprietary software solutions with access to agri-inputs, high premium markets, and financial services to micro-, small-, and medium sized companies to empower rural producer communities.



**KOLTIHUB**  
AGRI-INPUTS

Disrupting and improving agri-inputs trading, **powered by KoltiTrace FarmRetail.**

Vertical integration and service bundling to improve local agri-inputs production (seedling nurseries) and fertilizer, compost, farm tools, and other agri-inputs distribution.



**KOLTIHUB**  
SINGLE ORIGIN

Elevating traceable soft commodities trading to new transparency levels, **powered by KoltiTrace FarmGate.**

Through vertical integration and bundled services, we're making the global trade of high-quality & single-origin crops for premium markets more inclusive and transparent.



**KOLTIHUB**  
GROWTH FINANCING

Empowering smallholders with direct access to financial services, **powered by KoltiPay.**

We establish partnerships with local Financial Institutions to deliver tailored loan products, savings plans, insurance services, and cashless payment solutions.

# Our Executive Team



**Manfred Borer**  
Co-Founder, Chief Executive Officer, Chairman of the Board

**Manfred** has over 20 years' experience in entrepreneurship and 16 years in rural development and working alongside multinational companies' agriculture supply chains.



**Bernard Chevalier**  
Co-Founder, Chief of Staff, Member of the Board

**Bernard** has over 12 years of experience in leadership, organizational development, and project management in various executive positions in different Swiss companies



**Ainu Rofiq**  
Co-Founder, Member of the Board

**Rofiq** has more than 15 years experience in community development with technology and social agriculture.



**Furqonuddin Ramdhani**  
Co-Founder, Co-Chief Product-Technology Technology Officer

**Dhani** has more than 10 years experience in software development and data warehousing.



**Tika Sylvia**  
Chief Marketing Officer

**Tika** has 10+ years of experience in leading B2B2C across various industries, Logistic, Prop-Tech, and eCommerce.



**KOLTIVA**

BEYOND  
TRACEABILITY

[koltiva.com](http://koltiva.com)

[info@koltiva.com](mailto:info@koltiva.com)

[Linkedin](#)

[YouTube](#)

