

The Koltiva logo features a stylized white leaf icon to the left of the word "KOLTIVA" in a bold, white, sans-serif font. The background of the entire image is a vibrant sunset over a field, with a woman in the foreground holding a basket of mangoes and a man in the background holding a mango. Several large green leaves are scattered around the scene.

**KOLTIVA**

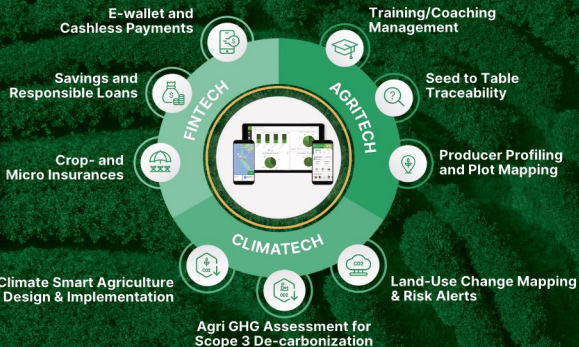


**Your Trusted Global Partner for  
EUDR Compliance: Empowering  
Businesses Worldwide**

[www.koltiva.com](http://www.koltiva.com)

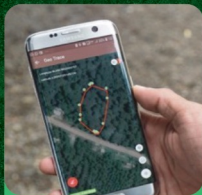
As a **triple-tech company**, we combine **Fintech**, **AgriTech**, and **Climatech** with 'boots on the ground' for sustainable global supply chains.

Professional Services, **Beyond Traceability**.



## End-to-End Solutions for all Supply Chain Actors

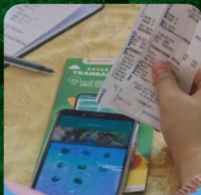
### KOLTITRACE



#### TECH SOLUTIONS FROM SEED TO TABLE

Web, mobile, GIS, and IOT solutions empowering producers and businesses in global supply chains.

### KOLTIPAY



#### RESPONSIBLE DIGITAL FINANCE AND PAYMENTS

Integrated fintech platform for cashless payments, loans, savings, micro-insurance, and bill payments.

### KOLTITRADE



#### AGRI-INPUTS DISTRIBUTION AND CROP TRADING

Distribution of high quality agri-inputs and single origin crop post-harvest processing and trading.

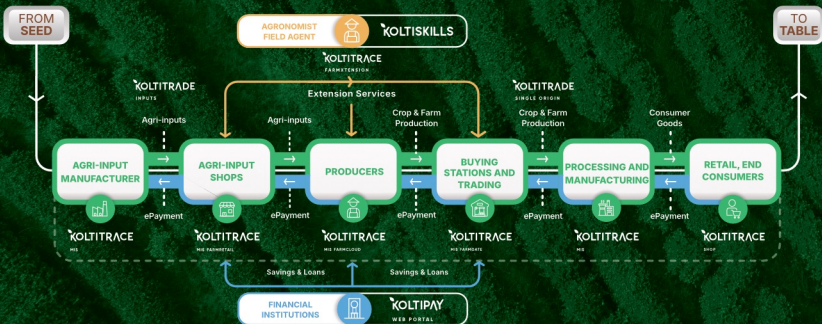
### KOLTISKILLS



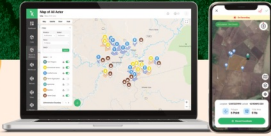
#### PROFESSIONAL SERVICES BEYOND TRACEABILITY

'Boots on the Ground' for extension services, farming support, and carbon monitoring.

## Our Holistic Tech & Service Solutions



# KoltiTrace MIS, Assisting Businesses to Comply with EUDR Requirements



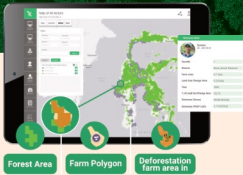
## EUDR Supply Chain Mapping and Risk Assessment

The KoltiTrace MIS Mobile App enables processors to map supply chains, conduct farm and risk assessments, and ensure producer compliance. It also records supply chain linkages among producers, intermediaries, and processors.



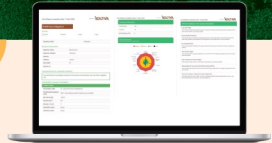
## Transactional Traceability

KoltiTrace MIS offers robust crop production data visualization and transactional traceability from producers to manufacturers for over 57 crops.



## Land Use Tracker & Spatial Legality Verification

We utilize satellite imagery data for automatic deforestation monitoring and integrate local protected area maps to spatially verify producers' legal compliance.



## EUDR Due Diligence Report

We automatically generate due diligence statements, exportable in formats like GeoJSON for EU Information System submission.

## KoltiSkills, Extension Services: Our EUDR Service Solutions Paving the Way for Sustainable Future



### SUPPLY CHAIN MAPPING AND VERIFICATION

We map producers and product origins, verify farm practices and emissions, and ensure compliance with sustainability standards.



### PRODUCT TRACEABILITY

We monitor supply chain actors in the field to verify product segregation and support quality control, from seed to table.



### TRAINING AND COACHING

We provide group training to raise awareness of sustainable practices and one-on-one coaching support producer households in implementing farm development plans.

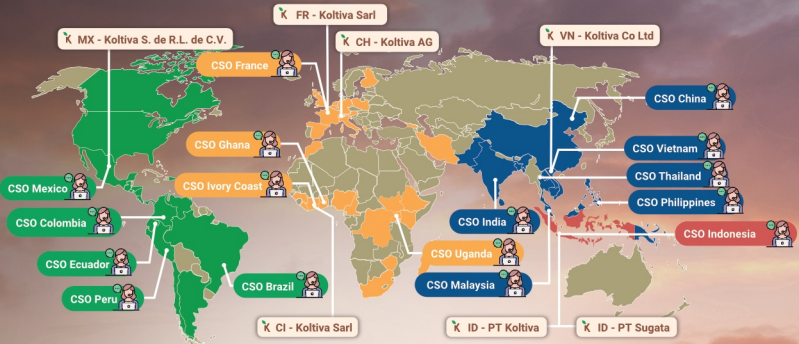


### LAND LEGALITY AND CERTIFICATION

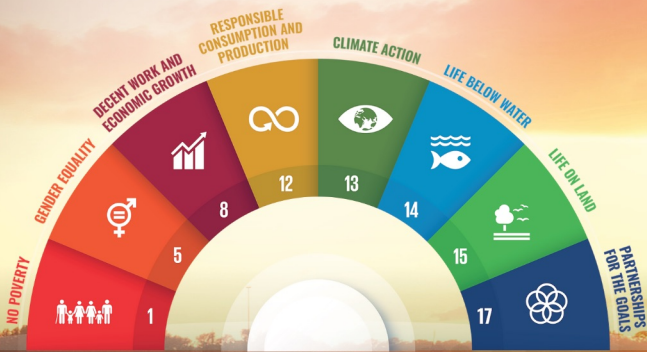
We support producers in obtaining land legality documentation and certifications such as RA, FairTrade, FSC, and other standards.



# Connect Globally for a Sustainable Future



## Take Action for the Sustainable Development Goals



## Beyond Traceability

### PT KOLTIVA

RA Mampang Office, 6th floor  
Jl. Mampang Prapatan Raya  
No. 66 A - 66 B, Mampang  
Prapatan South Jakarta,  
12790, Indonesia

### KOLTIVA AG

Baselstrasse 8, 4532  
Feldbrunnen-St.Niklaus,  
Switzerland

### KOLTIVA SARL

Abidjan-Cocody Riviera  
3 LOT 99M ILOT 5  
Section AP, Parcelle 275  
25 BP 757 ABJ 25  
Abidjan, Côte d'Ivoire

### KOLTIVA SRL de CV

Colima 161 Exterior,  
161 en el piso 6 Oficina 6011  
Roma Norte Cuauhtémoc  
CDMX, Mexico City, 06700,  
Mexico

### KOLTIVA Co. Ltd.

41 - 47 Đông Du,  
Phường Bến Nghé,  
Quận 1, thành phố  
Hồ Chí Minh, Việt Nam

### KOLTIVA SARL

25, Place de  
la Madeleine  
75008 - Paris,  
France

### PT KOLTIVA

Jl. Batur Sari No.20 SB,  
Sanur, Denpasar Selatan  
Denpasar City, Bali,  
80228, Indonesia

### PT KOLTIVA

Miles Coworking Space  
Jl. Jambu, Losari  
Ujung Pandang,  
South Sulawesi,  
90113 Indonesia

### PT KOLTIVA

SINERGI Coworking Space  
Jl. Cenderawasih No.32 B  
Demangan, Caturtunggal,  
Depok, Sleman, Yogyakarta  
55281, Indonesia

See Our Journey



koltiva.com/eudrcompliance