

MEDIA FACT SHEET

The Leading Indonesia-Based Sustainable Agriculture & Supply Chain Traceability Startup



ABOUT KOLTIVA - Offering human-centered technology and boots-on-the-ground solutions that digitize agribusinesses and help smallholder producers transition to sustainable practices and traceable sourcing, **KOLTIVA** is recognized as the leading Indonesia-based sustainable agriculture and supply chain traceability startup. As a global technology provider, it constructs ethical, transparent, and sustainable supply chains, assisting enterprises in fortifying their resilience and transparency.

The company helps businesses and their suppliers comply with ever-changing regulations and consumer demands worldwide with traceability solutions. Operating in more than 61 countries and fortified by a network of 16 customer support offices, Koltiva is steadfast in supporting over 8,000 enterprises in establishing transparent and robust supply chains while empowering over 1,170,000 producers to increase their annual income.

HEADQUARTER
Jakarta, Indonesia.

FOUNDED IN
2013.

TRIPLE-TECH COMPANY
AgriTech, FinTech, ClimaTech.

KEY INVESTORS
AC Ventures, Silverstrand Capital, Planet Rise, Development Finance Asia, Blue 7, The Meloy Fund.

EXECUTIVE TEAM
Manfred Borer (CEO, Co-Founder), Benard Chevalier (Chief of Staff, Co-Founder), Ainu Rofiq (Co-Founder), Furqonuddin Ramdhani (CTO, Co-Founder), Michael Perera (CPO), Patrick J. Hopper (COO), Tika Sylvia (CMO).

52 CROPS & COMMODITIES

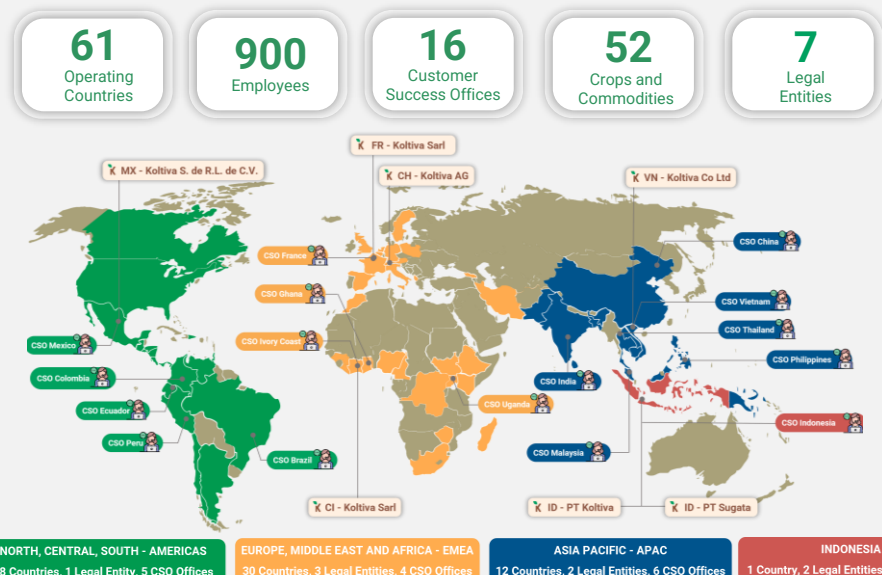
- Cocoa
- Coffee
- Rubber
- Palm Oil
- Sorghum
- Mango
- Seaweed
- Corn
- Rattan
- Sea Salt
- Shrimp
- Mango
- Durian
- Pomelo
- Vanilla
- Dairy
- Maize
- Arenca Palm

And Numerous Others

BUSINESS SOLUTIONS

- ✓ **KoltiTrace**, Traceability Solutions.
- ✓ **KoltiPay**, Responsible Digital Finance for Cashless Economy.
- ✓ **KoltiTrade**, Agri-Input Distribution and Crop Trading.
- ✓ **KoltiSkills**, Extension Services for Sustainable Sourcing.

4 GLOBAL REGIONS WITH 61 OPERATING COUNTRIES



Unveiling Market Pain Points and Key Drivers in the Global Supply Chains



Driven by the Growing Demand of Ever-Changing Regulation To Comply with Stringent Regulations

Over 50,000 EU-based businesses and non-EU companies engaged in the EU market must adhere to the European Union Deforestation Regulation (EUDR) that enforces stringent due diligence on businesses to combat global deforestation by December 2024.



Climate Change and Smallholders' Vulnerability In Agriculture Supply Chain

Over 630M agriculture smallholders and micro-enterprises are vulnerable to climate change. On the other hand, agriculture is a major part of the climate problem, that causes 19-29% of total GHG emissions.



Growing Consumer Demand for Sustainable and Safe Products

The surge in consumer demand for sustainable products is reshaping industries and driving companies to adopt socially and environmentally responsible practices, reduce environmental harm and prioritize eco-friendly sourcing, manufacturing, and distribution processes.



AWARDS

- Uplink
- GRAFT Challenge 2021
- ClimaTech Run 2022
- GrowAsia
- Youth South 4
- UNFPA
- UNDP
- Sustainable Marketing Challenge 2023, Marketeers



MEMBERSHIPS

- Swiss Platform for Sustainable Cocoa (SWISSCO)
- SwissCham Indonesia
- SME Finance Forum
- Global Coffee Platform (GCP)
- Global Platform for Sustainable Natural Rubber (GPSNR)
- PISAgro
- Roundtable on Sustainable Palm Oil (RSPO)
- Cool Farm Alliance
- Cocoa Association of Asia (CAA)
- Sustainable Coconut Partnership (SCP)
- Conservation Alliance for Seafood Solutions

KOLTIVA has collaborated with prominent agri-enterprises, managing some of the world's largest supply chains.

Working on diverse projects with multinational corporations across various commodities has strengthened its ability to grasp the client's needs and develop tailored solutions quickly.

This experience has enhanced KOLTIVA's adaptability in addressing supply chain challenges, such as customized traceability and certification systems, and providing training and coaching specific to different commodities, particularly for stakeholders with limited digital and financial literacy and knowledge of regenerative agriculture.

For over a decade, Koltiva has honed expertise in creating a trusted and reliable traceability platform and sustainability tools.

Initially launched as CocoaTrace in 2013, KoltiTrace has evolved over 11 years of dedicated development into the leading web platforms and mobile applications serving the needs of small, medium, and large enterprises across various commodities, spanning from farm inputs to manufacturing.

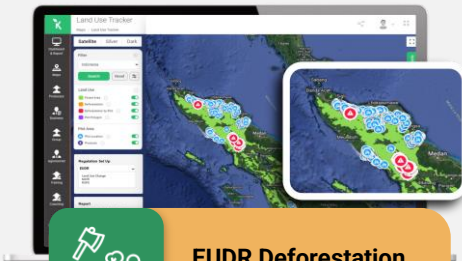
The KoltiTrace platform is critical in automating the generation of due diligence statements, risk assessments, and producer lists from collected data, simplifying the process of submitting evidence for EUDR Compliance.



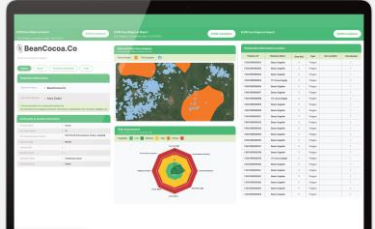
EUDR Supply Chain Mapping and Risk Assessment



Land Use Tracker & Initial Legality Verification

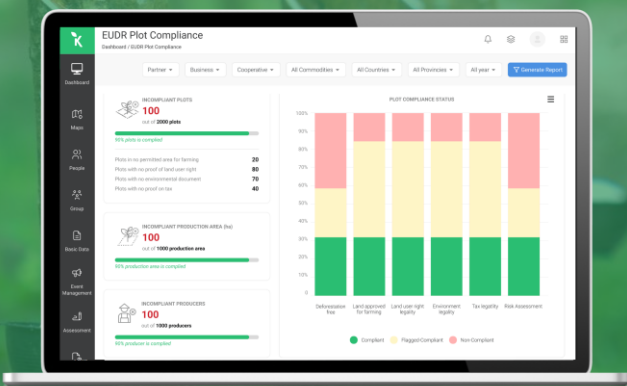


EUDR Deforestation Maps



EUDR Due Diligence Statement

Additionally, it generates dynamic compliance reports for a comprehensive overview of the global supply chain's alignment with regulations and standards. Read more about our solutions for potentially 50,000 businesses worldwide to comply with EUDR:



Unlock EUDR Success with Koltiva and Navigate Compliance Effortlessly

www.koltiva.com/eudrcompliance