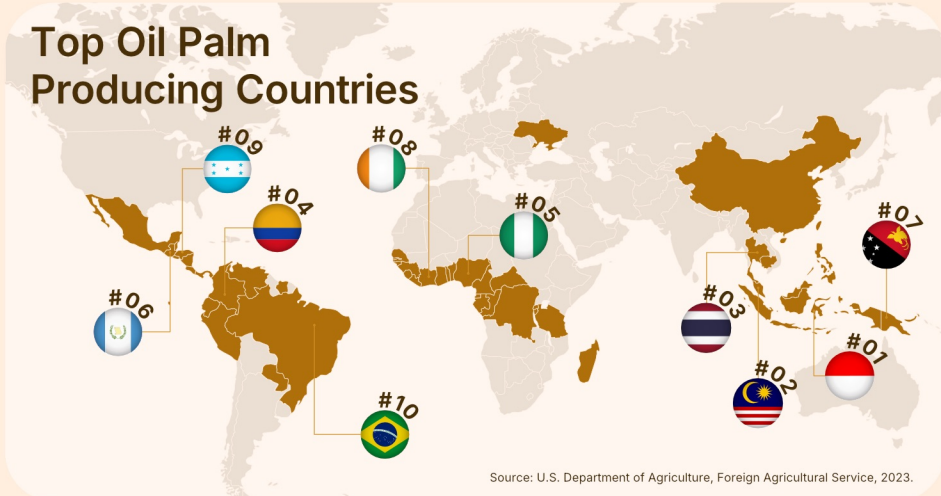


General Information

Oil Palm (*Elaeis guineensis* Jacq.) is originally from West Africa

Top Oil Palm Producing Countries



30 mio ha
Total Land Use for Oil Palm Globally
a nearly 10-fold increase over 50 years



7 mio
Global Oil Palm Producers

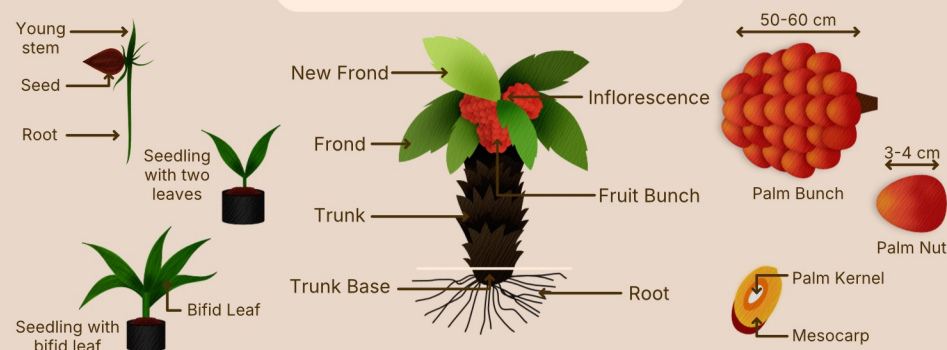
81 Global
mio tons Production
Doubled in the last 10 years



78 Global
mio tons Consumption

Source: Our World in Data, 2021 RSP0, n.d Statista, 2024

PART OF OIL PALM TREE



Current Issues



The EU Deforestation-Free Regulation (EUDR) mandates that palm oil and its derivative, starting from December 31, 2024*, must be verifiably free of deforestation and degradation.

*The European Commission has proposed a one-year delay to the implementation of the EUDR, but the decision is still under review.

The expansion of oil palm plantations often involves converting forests into agricultural land, leading to biodiversity loss and ecosystem disruption.



Palm oil production contributes to significant GHG emissions, estimated at around 6 kg CO₂e per kg of Crude Palm Oil. These emissions are primarily driven by land-use change (LUC), peat soil degradation, and the breakdown of palm oil mill effluent (POME). However, there are ongoing efforts to shift towards sustainable practices and achieve net-zero emissions.

Source: WWF, 2022

CO₂

Many oil palm plantation areas in late mature stage leads to yield declining and prone to pest and disease attacks. Yet replanting cost remain high for producers.



Ganoderma is a fungal disease that affects palm trees, leading to reduced yields and increased costs for producers. There is still no curative method to control this disease.

Good Agriculture Practices

Oil Palm growth

is suitable on dry land and swamp area with rainfall as 1.750 mm - 3.000 mm/year and preferable planted in flat to undulated area with elevation at < 500 m asl



Population of Oil Palm is 130-150 tree per ha

Planting materials

can be seed or seedlings



Seedling: 1 year
Immature phase: 2,5 - 3 years
Mature phase: 25 years

2-3 kg per plant per year

Fertilizer dosage:
for KCl, Urea, RP/SP-36 and micro-fertilizers

Common pest & disease (P&D): basal stem root (*Ganoderma bonineense*), rat, bagworm, fruit bunch rot (*Marasmius palmivorus*), *Oryctes sp.*

Potential yield: 8 ton Crude Palm Oil (CPO) per ha

Average yield:
2.5 ton CPO per ha for smallholders & 3.48-4.82 ton CPO per ha for large plantations

2.5 ton CPO

3.48-4.82 ton CPO

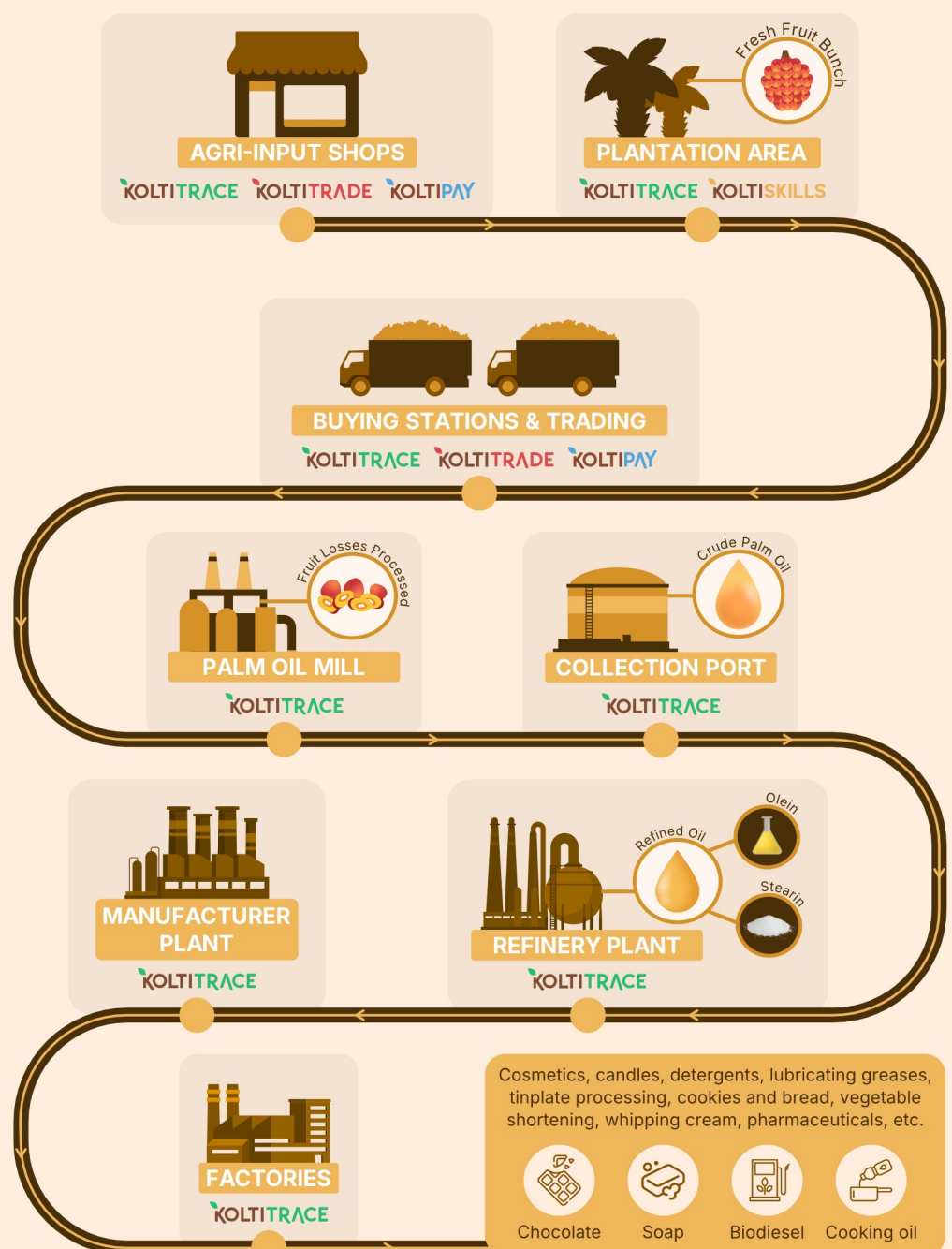
Common weeds: cogon grass (*Imperata cylindrica*), *Clidemia hirta*, *Melastoma malabathricum*, *Mikania sp.*, *Stenochleana palustris*

P&D and weeds

are controlled by hand picking, pesticide, herbicide, biological control (predator)



Supply Chain



Palm Oil is harvested as Fresh Fruit Bunches (FFB) in the field and processed in the mill as Crude Palm Oil (CPO). These oil then processed in refinery plant for many derivatives products.

Indonesia, The Largest Palm Oil Producers

Palm Oil Overview in Indonesia

16.38
mio ha
Total Oil
Palm Area



37%
of the land
is owned by
smallholders



47.7
mio tons
CPO Estimated
Annual Production



3.700
kg/ha
Productivity

Export Volume in 2022

26.33
mio tons



Export Value in 2022



\$29.75
bio USD

Total Smallholder
Producers (2022)

2.7 million

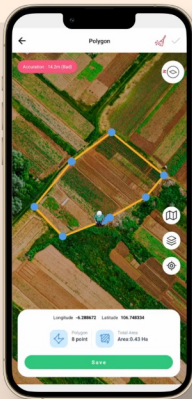


*Estimated data from Ministry of Agriculture, 2024
*Data includes contributions from smallholder farms, state-owned plantations, and private plantations.

Top 10 Importing Countries:

India	16.94%
China	13.16%
Pakistan	9.96%
USA	7.24%
Malaysia	5.34%
Bangladesh	4.72%
Netherlands	3.28%
Vietnam	2.63%
New Zealand	0.78%
Others	34.02%

How We Can Support Palm Oil Business



Producers and
Plot Survey
Mapping



Training and
Coaching
Producers
to enhance
sustainability
and
productivity.



Financial
Inclusion
and Market
Access



Achieve EUDR
Compliance
with our
tailored,
modular
approach.

Certification



Palm Oil certification is essential to ensuring sustainable practices in palm oil production.

There are several certifications in palm oil industry, e.g. RSPO, RA, ISCC, ISPO, and MSPO

Our Projects Across 12 Provinces in Indonesia: Supporting Businesses in Achieving Sustainable Palm Oil

