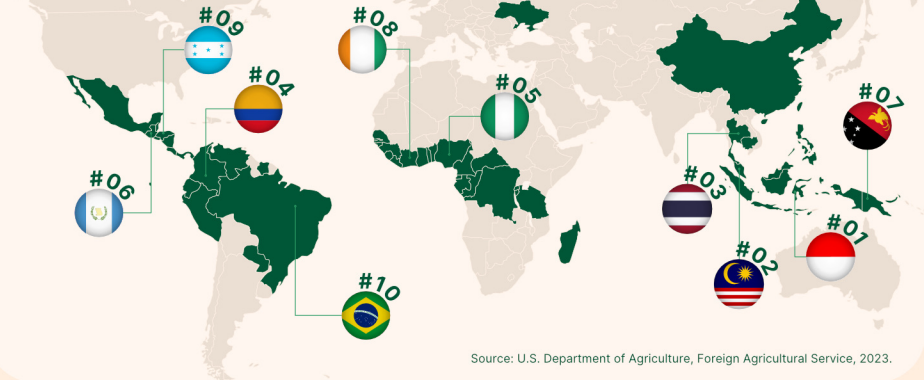




## General Information

Oil Palm (*Elaeis guineensis* Jacq.) is originally from West Africa

### Top Oil Palm Producing Countries



**30 mio ha**  
Total Land Use for Oil Palm Globally  
*a nearly 10-fold increase over 50 years*

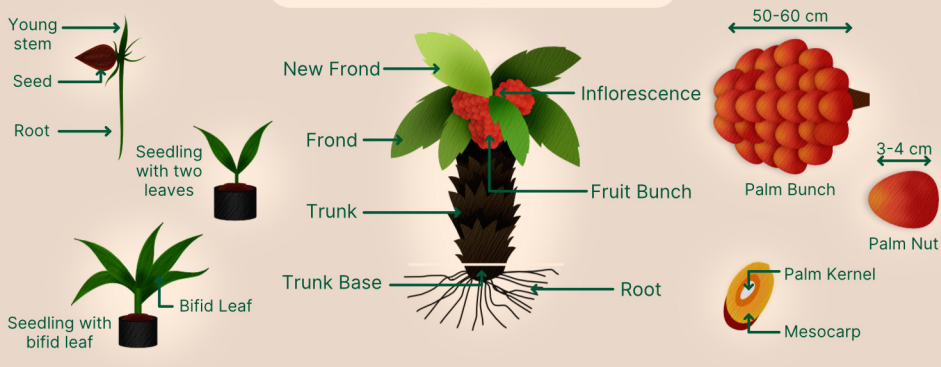
**7 mio**  
Global Oil Palm Producers

**81 mio tons Production**  
*Doubled in the last 10 years*

**78 mio tons Consumption**

Source: Our World in Data, 2021 RSPO, n.d Statista, 2024

### PART OF OIL PALM TREE



## Current Issues

The EU Deforestation-Free Regulation (EUDR) mandates that palm oil and its derivative, starting from December 31, 2024, must be verifiably free of deforestation and degradation.

The expansion of oil palm plantations often involves converting forests into agricultural land, leading to biodiversity loss and ecosystem disruption.

Palm oil production contributes to significant GHG emissions, estimated at around 6 kg CO<sub>2</sub>e per kg of Crude Palm Oil. These emissions are primarily driven by land-use change (LUC), peat soil degradation, and the breakdown of palm oil mill effluent (POME). However, there are ongoing efforts to shift towards sustainable practices and achieve net-zero emissions. *Source: WWF, 2022*

Many oil palm plantation areas are in late mature stage leads to yield declining and prone to pest and disease attacks. Yet replanting cost remain high for producers.

Ganoderma is a fungal disease that affects palm trees, leading to reduced yields and increased costs for producers. There is still no curative method to control this disease.

## Good Agriculture Practices

### Oil Palm growth

is suitable on dry land and swamp area with rainfall as 1.750 mm - 3.000 mm/year and preferable planted in flat to undulated area with elevation at < 500 m asl



**Population** of Oil Palm is 130-150 tree per ha

### Planting materials

can be seed or seedlings



Seedling: 1 year  
Immature phase: 2,5 - 3 years  
Mature phase: 25 years

**Fertilizer dosage:** 2-3 kg per plant per year for KCl, Urea, RP/SP-36 and micro-fertilizers

Common pest & disease (P&D): basal stem root (*Ganoderma bonineense*), rat, bagworm, fruit bunch rot (*Marasmius palmivorus*), *Oryctes sp.*

**Potential yield:** 8 ton Crude Palm Oil (CPO) per ha

**Average yield:** 2.5 ton CPO per ha for smallholders & 3.48-4.82 ton CPO per ha for large plantations

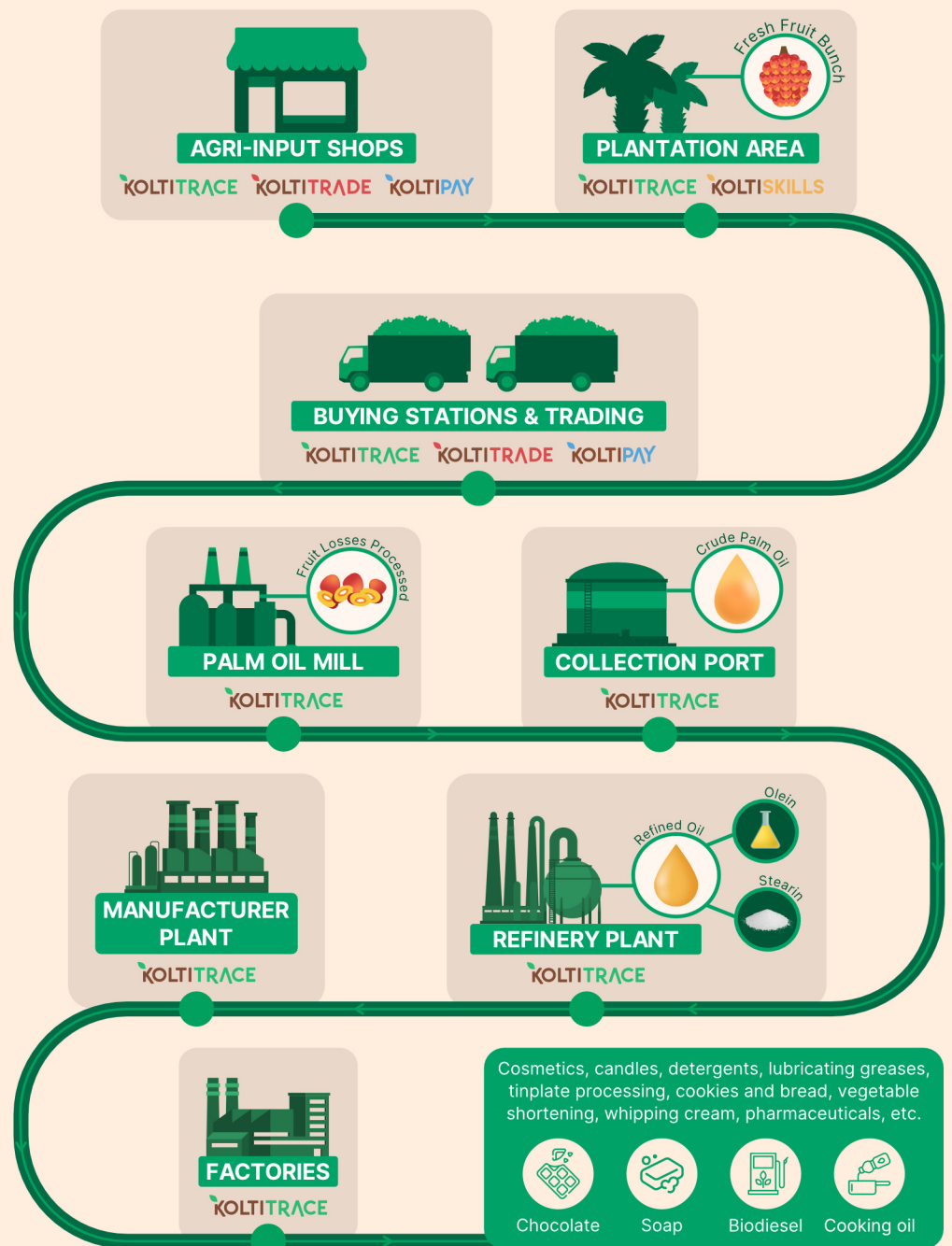


Common weeds: cogon grass (*Imperata cylindrica*), *Clidemia hirta*, *Melastoma malabathricum*, *Mikania sp.*, *Stenochleana palustris*

**P&D and weeds** are controlled by hand picking, pesticide, herbicide, biological control (predator)



## Supply Chain



Palm Oil is harvested as Fresh Fruit Bunches (FFB) in the field and processed in the mill as Crude Palm Oil (CPO). These oil then processed in refinery plant for many derivatives products.



# Indonesia, The Largest Palm Oil Producers

## Palm Oil Overview in Indonesia

**16.38**  
mio ha  
Total Oil  
Palm Area



**37%**  
of the land  
is owned by  
smallholders



Export Volume in 2022

**26.33**  
mio tons



Export Value in 2022



**\$29.75**  
bio USD



**47.7**  
mio tons  
CPO Estimated  
Annual Production



**3.700**  
kg/ha  
Productivity

Total Smallholder  
Producers (2022)

**2.7 million**

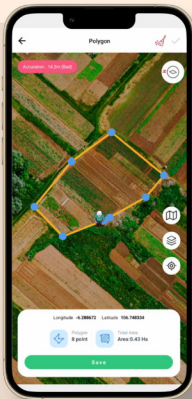


\*Estimated data from Ministry of Agriculture, 2024  
\*Data includes contributions from smallholder farms, state-owned plantations, and private plantations.

## Top 10 Importing Countries:

India	16.94%
China	13.16%
Pakistan	9.96%
USA	7.24%
Malaysia	5.34%
Bangladesh	4.72%
Netherlands	3.28%
Vietnam	2.63%
New Zealand	0.78%
Others	34.02%

## How We Can Support Palm Oil Business



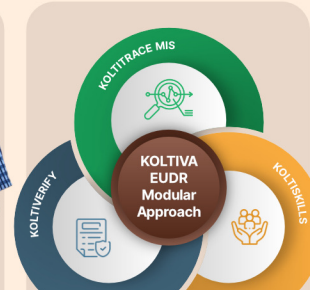
Producers and  
Plot Survey  
Mapping



Training and  
Coaching  
Producers  
to enhance  
sustainability  
and  
productivity.



Financial  
Inclusion  
and Market  
Access



Achieve EUDR  
Compliance  
with our  
tailored,  
modular  
approach.

## Certification



Palm Oil certification is essential to ensuring sustainable practices in palm oil production.

There are several certifications in palm oil industry, e.g. RSPO, RA, ISCC, ISPO, and MSPO

## Our Projects Across 12 Provinces in Indonesia: Supporting Businesses in Achieving Sustainable Palm Oil

